

Robert A. Gross, MD, PhD, FAAN, Editor-in-Chief, *Neurology*[®]

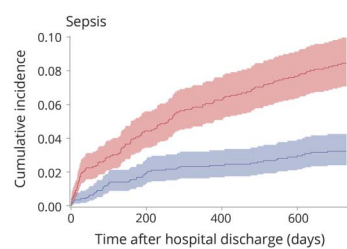


Notable in *Neurology* this week

This issue features an article that details a case series of severe disease activation in patients with multiple sclerosis 6 months after induction of alemtuzumab; another identifies effects of prenatal Zika virus infection on brainstem function using brainstem auditory evoked potentials. A featured Contemporary Issues: Innovations in Education article presents the concept of entrustable professional activities and their use in assessment of students in competency-based medical education programs.

Articles

Outcomes among patients with direct enteral vs nasogastric tube placement after acute stroke



Direct enteral feeding tubes (DET) are used in up to 10% of patients after stroke. In this study, patients with DET had a greater risk of disability, pneumonia, and mortality after stroke compared to patients using nasogastric tubes alone. Knowledge of such risk factors may inform care decisions after stroke.

Page 312

From editorialist Galovic: “This study highlights the need for further sufficiently powered randomized controlled trials in dysphagic stroke.”

Page 305

Long-term cardiovascular prognosis after transient ischemic attack: Associated predictors

Patients with TIA have long-term cardiovascular risk, including stroke and nonstroke events. The main prognostic factor is etiology subgroup. This study highlights the clinical relevance of detecting atherosclerosis in TIA patients.

Page 313

Smoking and Parkinson disease: Evidence for gene-by-smoking interactions

Despite years of research, whether the inverse smoking–Parkinson disease (PD) association is causal remains unknown. The authors identified and replicated interactions between smoking and polymorphisms in 2 genes (*RXRA*, *SLC17A6*) involved in susceptibility to xenobiotics. The resulting evidence suggests gene-by-smoking interactions that may help identify biological pathways involved in the smoking–PD relation.

Page 317

From editorialists Fujioka et al.: “To find clues to the genetic and environmental contributions to PD, including investigation of different molecules, further studies with larger number of participants are warranted.”

Page 307

MORE ONLINE

🎧 Editor’s Summary

Audio summary of highlighted articles.

NPub.org/edsum

Continued

Smoking affects the interferon beta treatment response in multiple sclerosis

In this study of interferon-treated patients with relapsing-remitting multiple sclerosis, the authors investigated the relationship between smoking and relapse. Each pack of cigarettes smoked per day was associated with a 27% increased relapse rate. Increased focus on the modifiable risk factor of smoking cessation in multiple sclerosis is needed.

Page 318

NB: "Infantile-onset hand dystonia with intellectual disability: Clues to ARX mutations," p. 333. To check out other Clinical/Scientific Notes, point your browser to Neurology.org/N. At the end of the issue, check out the Resident & Fellow Education Research article discussing the association of a patient's ability to identify physicians involved in his or her care and the patient's overall satisfaction. This week also includes a Reflections: Neurology and the Humanities short story titled "Simply call him abuelo."

NEW EPISODE



February 13, 2018

CME Opportunity:

Listen to this week's *Neurology*[®] Podcast and earn 0.5 AMA PRA Category 1 CME Credits™ by answering the multiple-choice questions in the online Podcast quiz.

Medical retirement from sport after concussions: A practical guide for a difficult discussion (February 2018 issue of *Neurology*[®] *Clinical Practice*)

1. Featured Article: Medical retirement from sport after concussions: A practical guide for a difficult discussion
2. What's Trending: CGRP studies/migraine

This podcast begins and closes with Dr. Robert Gross, Editor-in-Chief, briefly discussing highlighted articles from the February 13, 2018, issue of *Neurology*. In the first segment, Dr. Jason Crowell talks with Dr. James Noble about his paper on athletes who retire from sports following concussion. In the second part of the podcast, Dr. Tesha Monteith focuses her interview with Dr. Peter Goadsby on CGRP and migraine.

Disclosures can be found at Neurology.org/podcast.

No CME will be offered this week: Interviews based on articles from *Neurology: Clinical Practice*, *Neurology*[®] *Genetics*, and *Neurology*[®] *Neuroimmunology & Neuroinflammation* are excluded from the CME program.

Neurology[®]

Spotlight on the February 13 issue

Robert A. Gross

Neurology 2018;90;303-304

DOI 10.1212/WNL.0000000000004944

This information is current as of February 12, 2018

Updated Information & Services

including high resolution figures, can be found at:
<http://n.neurology.org/content/90/7/303.full.html>

Permissions & Licensing

Information about reproducing this article in parts (figures, tables) or in its entirety can be found online at:
<http://n.neurology.org/misc/about.xhtml#permissions>

Reprints

Information about ordering reprints can be found online:
<http://n.neurology.org/misc/addir.xhtml#reprintsus>

Neurology® is the official journal of the American Academy of Neurology. Published continuously since 1951, it is now a weekly with 48 issues per year. Copyright © 2018 American Academy of Neurology. All rights reserved. Print ISSN: 0028-3878. Online ISSN: 1526-632X.

