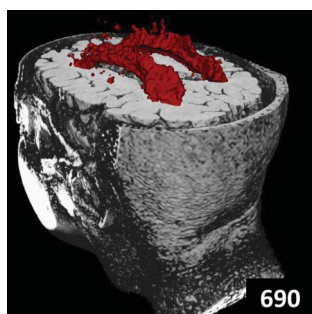

**715**

**690**

Select figures listed on the Table of Contents only appear within the full-length articles online.

## In Focus

677 **Spotlight on the October 9 issue**

678 **This Week's *Neurology*® Podcast**

## Editorials

679 **It's time to stop saying "the mind is unaffected" in ALS**  
P. Wicks and S.M. Albert

682 **An MRI biomarker of mixed pathology**  
D.A. Bennett

684 **Immediate vs delayed treatment of first unprovoked seizure: To treat, or not to treat?**  
C.S. Jacobs and J.W. Lee

## Articles: Short Format

Full articles at [Neurology.org/N](http://Neurology.org/N)

686 **ALS-specific cognitive and behavior changes associated with advancing disease stage in ALS**

C. Crockford, J. Newton, K. Lonergan, T. Chiwera, T. Booth, S. Chandran, S. Colville, M. Heverin, I. Mays, S. Pal, N. Pender, M. Pinto-Grau, R. Radakovic, C.E. Shaw, L. Stephenson, R. Swingler, A. Vajda, A. Al-Chalabi, O. Hardiman, and S. Abrahams

[CME Course](#) [Open Access Article](#) [Editorial](#), p. 679

687 **The Charcot-Marie-Tooth Functional Outcome Measure (CMT-FOM)**

K. Eichinger, J. Burns, K. Cornett, C. Bacon, M.L. Shepherd, J. Mountain, J. Sowden, R. Shy, M.E. Shy, and D.N. Herrmann

688 **Glial fibrillary acidic protein elevations relate to neuroimaging abnormalities after mild TBI**

J. Gill, L. Latour, R. Diaz-Arrastia, V. Motamedi, C. Turtzo, P. Shahim, S. Mondello, C. DeVoto, E. Veras, D. Hanlon, L. Song, and A. Jeromin

[CME Course](#) [Class of Evidence](#)

689 **Serum neurofilament light chain in behavioral variant frontotemporal dementia**

P. Steinacker, S. Anderl-Straub, J. Diehl-Schmid, E. Semler, I. Uttner, C.A.F. von Arnim, H. Barthel, A. Danek, K. Fassbender, K. Fliessbach, H. Foerstl, T. Grimmer, H.-J. Huppertz, H. Jahn, J. Kassubek, J. Kornhuber, B. Landwehrmeyer, M. Lauer, J.M. Maler, B. Mayer, P. Oeckl, J. Prudlo, A. Schneider, A.E. Volk, J. Wiltfang, M.L. Schroeter, A.C. Ludolph, and M. Otto, on behalf of the FTLDC study group

[Class of Evidence](#)

690 **An MRI measure of degenerative and cerebrovascular pathology in Alzheimer disease**

A.M. Brickman, G. Tosto, J. Gutierrez, H. Andrews, Y. Gu, A. Narkhede, B. Rizvi, V. Guzman, J.J. Manly, J.P. Vonsattel, N. Schupf, the Alzheimer's Disease Neuroimaging Initiative, and R. Mayeux

[Editorial](#), p. 682

691 **Enzyme replacement therapy and white matter hyperintensity progression in Fabry disease**

J.D. Stefaniak, L.M. Parkes, A.R. Parry-Jones, G.M. Potter, A. Vail, A. Jovanovic, and C.J. Smith

[Open Access Article](#)

692 **Retinal vasculopathy with cerebral leukoencephalopathy (RVCL): A rare mimic of tumefactive MS**

J. Raynowska, D.P. Miskin, B. Pramanik, S. Asiry, T. Anderson, J. Boockvar, S. Najjar, and A. Harel

[Ahead of Print Articles and Editorials](#)

[Npub.org/headofprint](http://Npub.org/headofprint)

*Continued*

693 **Antiepileptic drug treatment after an unprovoked first seizure: A decision analysis**

E.L. Bao, L.-Y. Chao, P. Ni, L.M.V.R. Moura, A.J. Cole, S.S. Cash, D.B. Hoch, M.T. Bianchi, and M.B. Westover

[Editorial](#), p. 684

694 **A dozen years of evolution of neurology clerkships in the United States: Looking up**

J.E. Safdieh, A.D. Quick, P.J. Korb, D. Torres-Russotto, K.L. Gable, M. Rock, C. Cahill, and M. Soni, for the American Academy of Neurology Consortium of Neurology Clerkship Directors 2017 Neurology Clerkship Director Survey Workgroup

695 **2017 Program Director Survey: Feedback from your adult neurology residency leadership**

Z.N. London, J. Khan, C. Cahill, E. Schuyler, J. Wold, and A.M. Southerland

### What's Happening

696 **What's happening in *Neurology*<sup>®</sup> *Clinical Practice***

### Special Article

697 **Quality improvement in neurology: Neuro-otology quality measurement set**

H. Rizk, Y. Agrawal, S. Barthel, M.L. Bennett, J.K. Doherty, P. Gerend, D.R. Gold, D. Morrill, J.G. Oas, J.K. Roberts, E. Woodson, D.A. Zapala, A. Bennett, and A.M. Shenoy

### Medical Hypothesis

702 **CNS disease-related protein variants as blood-based biomarkers in traumatic brain injury**

S.M. Williams, C. Peltz, K. Yaffe, P. Schulz, and M.R. Sierks

### Clinical/Scientific Notes

710 **Chorea, psychosis, acanthocytosis, and prolonged survival associated with *ELAC2* mutations**

M. Paucar, A. Pajak, C. Freyer, Å. Bergendal, M. Döry, J.M. Laffita-Mesa, H. Stranneheim, K. Lagerstedt-Robinson, I. Savitcheva, R.H. Walker, A. Wedell, A. Wredenberg, and P. Svenningsson

[Open Access](#) [Video](#)

### Reflections: Neurology and the Humanities

713 **The head leads to the heart**

B.M. Kluger

[Audio](#)

### NeuroImages

715 **Unusual presentation of an Adie-like pupil: Cat's eye pupil**

R.A. Egan and C. Avruskin

### Resident & Fellow Section

717 **Pearls & Oysters: Enhancing vigilance for detection of cerebral air embolism: From syncope to death**

D. Mirtchev, T. Mehta, A. Daniel, T. Finstein, and L. McCullough

e1455 **Book Review: William Burroughs and neuropharmacology: Mentored by a madman**

P.A. Kempster

e1457 **Teaching NeuroImages: Morning glory disc anomaly**

G. Poillon, P. Gillard, and A. Lecler

e1459 **Teaching NeuroImages: Lyme disease presenting as Bannwarth syndrome**

A. Dabir and G. Pawar

### Disputes & Debates: Editors' Choice

721 **Editors' note: Behavioral interventions as a treatment for epilepsy: A multicenter randomized controlled trial**

C. Karam and S. Galetta

721 **Reader response: Behavioral interventions as a treatment for epilepsy: A multicenter randomized controlled trial**

N.K. Sethi

722 **Author response: Behavioral interventions as a treatment for epilepsy: A multicenter randomized controlled trial**

S.R. Haut and M. Privitera

722 **Editors' note: The nature of postural tremor in Parkinson disease**

C. Karam and S. Galetta

723 **Reader response: The nature of postural tremor in Parkinson disease**

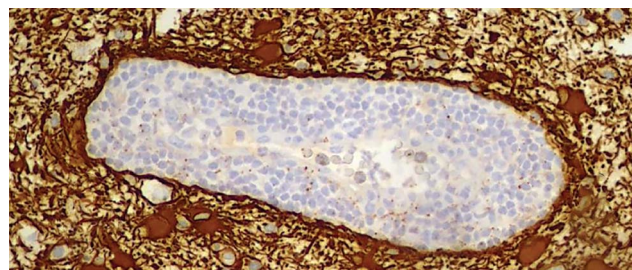
J. Jankovic

724 **Author response: The nature of postural tremor in Parkinson disease**

R.C. Helmich, M. Hallett, and M.F. Dirx

### Department

In the Next Issue of *Neurology*<sup>®</sup>



[Cover image](#)

Brain histopathology showing reactive astrocytes around a vessel wall infiltrated by mixed inflammatory cells in a patient with retinal vasculopathy with cerebral leukoencephalopathy.

[See page 692](#)

# Neurology<sup>®</sup>

91 (15)

*Neurology* 2018;91:e1440-724

**This information is current as of January 1, 2018**

**Updated Information & Services**

including high resolution figures, can be found at:  
<http://n.neurology.org/content/91/15.full>

**Permissions & Licensing**

Information about reproducing this article in parts (figures, tables) or in its entirety can be found online at:  
[http://www.neurology.org/about/about\\_the\\_journal#permissions](http://www.neurology.org/about/about_the_journal#permissions)

**Reprints**

Information about ordering reprints can be found online:  
<http://n.neurology.org/subscribers/advertise>

*Neurology*® is the official journal of the American Academy of Neurology. Published continuously since 1951, it is now a weekly with 48 issues per year. Copyright . All rights reserved. Print ISSN: 0028-3878. Online ISSN: 1526-632X.

