

Select figures listed on the Table of Contents only appear within the full-length articles online.

In Focus

- 53 **Spotlight on the July 10 issue**
- 54 **This Week's *Neurology*® Podcast**

Editorials

- 55 **The changing landscape of epilepsy surgery: No longer the "last resort"**
A.T. Berg, J.T. Langfitt, and G.D. Cascino
- 57 **Sudden death risk among children with epilepsy**
S.V. Kothare and E. Trevathan

Articles: Short Format

Full articles at Neurology.org/N

- 59 **European trends in epilepsy surgery**
M.O. Baud, T. Perneger, A. Rácz, M.C. Pensel, C. Elger, B. Rydenhag, K. Malmgren, J.H. Cross, G. McKenna, M. Tisdall, H.J. Lamberink, S. Rheims, P. Ryvlin, J. Isnard, F. Mauguière, A. Arzimanoglou, S. Akkol, K. Deniz, C. Ozkara, M. Lossius, I. Rektor, R. Kälviäinen, L.-M. Vanhatalo, P. Dimova, K. Minkin, A.M. Staack, B.J. Steinhoff, A. Kalina, P. Krsek, P. Marusic, Z. Jordan, D. Fabo, E. Carrette, P. Boon, S. Rocka, R. Mameniškienė, S. Vulliemoz, F. Pittau, K.P.J. Braun, and M. Seeck
➔ Editorial, p. 55
- 60 **Incidence of sudden unexpected death in epilepsy in children is similar to adults**
A.E. Keller, R. Whitney, S.-A. Li, M.S. Pollanen, and E.J. Donner
➔ Editorial, p. 57
- 61 **Spindle activity in young children with autism, developmental delay, or typical development**
C.A. Farmer, P. Chilakamari, A.E. Thurm, S.E. Swedo, G.L. Holmes, and A.W. Buckley
- 62 **Neurologic outcomes in pediatric cardiac arrest survivors enrolled in the THAPCA trials**
R. Ichord, F.S. Silverstein, B.S. Slomine, R. Telford, J. Christensen, R. Holubkov, J.M. Dean, and F.W. Moler, For the THAPCA Trial Group
➔ CME Course
- 63 **Cortical superficial siderosis: A prospective observational cohort study**
S. Moulin, B. Casolla, G. Kuchcinski, G. Boulouis, C. Rossi, H. Hénon, D. Leys, and C. Cordonnier
➔ CME Course
- 64 **Association between diabetes and subsequent Parkinson disease: A record-linkage cohort study**
E. De Pablo-Fernandez, R. Goldacre, J. Pakpoor, A.J. Noyce, and T.T. Warner
- 65 **Transthyretin amyloid polyneuropathies mimicking a demyelinating polyneuropathy**
P. Lozeron, L.-L. Mariani, P. Dodet, G. Beaudonnet, M. Théaudin, C. Adam, B. Arnulf, and D. Adams
- 66 **Fingolimod vs dimethyl fumarate in multiple sclerosis: A real-world propensity score-matched study**
L. Prosperini, M. Lucchini, S. Haggiag, et al.
➔ Class of Evidence
- 67 **Neurocognitive functioning predicts frailty index in HIV**
H. Oppenheim, E.W. Paolillo, R.C. Moore, R.J. Ellis, S.L. Letendre, D.V. Jeste, I. Grant, and D.J. Moore, The HIV Neurobehavioral Research Program (HNRP)

➔ Ahead of Print Articles and Editorials

NPub.org/headofprint

Continued

- 68 **Cognitive ability in young adulthood predicts risk of early-onset dementia in Finnish men**

V. Rantalainen, J. Lahti, M. Henriksson, E. Kajantie, J.G. Eriksson, and K. Räikkönen

What's Happening

- 69 **What's happening in *Neurology*[®]**
- 70 **What's happening in *Neurology*[®] *Clinical Practice***
- 71 **What's happening in *Neurology*[®] *Genetics***
- 72 **What's happening in *Neurology*[®] *Neuroimmunology & Neuroinflammation***
- 73 **What's happening in *Innovations in Care Delivery***

Special Articles

- 74 **Practice guideline update summary: Efficacy and tolerability of the new antiepileptic drugs I: Treatment of new-onset epilepsy: Report of the Guideline Development, Dissemination, and Implementation Subcommittee of the American Academy of Neurology and the American Epilepsy Society**

A.M. Kanner, E. Ashman, D. Gloss, C. Harden, B. Bourgeois, J.F. Bautista, B. Abou-Khalil, E. Burakgazi-Dalkilic, E. Llanas Park, J. Stern, D. Hirtz, M. Nespeca, B. Gidal, E. Faught, and J. French

 Podcast  Level of Recommendation

- 82 **Practice guideline update summary: Efficacy and tolerability of the new antiepileptic drugs II: Treatment-resistant epilepsy: Report of the Guideline Development, Dissemination, and Implementation Subcommittee of the American Academy of Neurology and the American Epilepsy Society**


A.M. Kanner, E. Ashman, D. Gloss, C. Harden, B. Bourgeois, J.F. Bautista, B. Abou-Khalil, E. Burakgazi-Dalkilic, E. Llanas Park, J. Stern, D. Hirtz, M. Nespeca, B. Gidal, E. Faught, and J. French

 Level of Recommendation


Clinical/Scientific Notes

- 91 **Autoimmune pancerebellitis associated with pembrolizumab therapy**
- J.R. Vitt, C. Kreple, N. Mahmood, E. Dickerson, G.Y. Lopez, and M.B. Richie

Reflections: Neurology and the Humanities

- 94 **The vault**
- L. Gutmann
-  Audio

Video NeuroImages

- 97 **Deliberate gait scissoring to overcome freezing of gait in Parkinson disease**
- J. Nonnekes and B.R. Bloem
-  Video

Resident & Fellow Section

- 98 **Child Neurology: Treatable bilateral striatal lesions related to anti-dopamine 2 receptor autoimmunity**
- C. Marques-Matos, C. Melo, M. Sampaio, E. Rodrigues, R. Sousa, and D. Alves

- e180 **Clinical Reasoning: Acute onset of diplopia in pregnancy**

Z. Munro and D. Fernandez

- e185 **Teaching NeuroImages: Cerebral cortex swelling in Creutzfeldt-Jakob disease with V180I mutation**

A. Sugiyama, M. Beppu, and S. Kuwabara

- e187 **Teaching NeuroImages: Brain MRI and DaT-SPECT imaging in adult GM1 gangliosidosis**

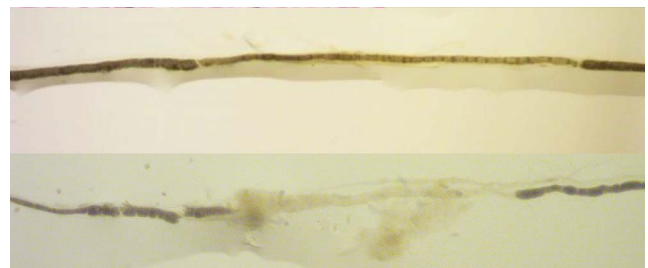
A. Marangi, M. Tagliapietra, V. Vicenzi, I. Pasquin, and A. Salviati

Disputes & Debates: Editors' Choice

- 102 **Editors' note: Clinical Reasoning: Prognostication after cardiac arrest: What do we really know?**
- M. Alcauskas and S. Galetta
- 102 **Reader response: Clinical Reasoning: Prognostication after cardiac arrest: What do we really know?**
- B.E. Freund and P.W. Kaplan
- 103 **Author response: Clinical Reasoning: Prognostication after cardiac arrest: What do we really know?**
- R. Beekman, D.M. Greer, D.C. Brooks, and C.B. Maciel
- 103 **Editors' note: A predictive model to identify Parkinson disease from administrative claims data**
- M. Alcauskas and S. Galetta
- 104 **Reader response: A predictive model to identify Parkinson disease from administrative claims data**
- T. Kawada
- 104 **Author response: A predictive model to identify Parkinson disease from administrative claims data**
- S. Searles Nielsen and B.A. Racette

Department

In the Next Issue of *Neurology*[®]



Cover image

Teased fiber preparation showing segmental demyelination/remyelination and amyloid deposit in contact with segmental demyelination in a patient with dFAP.

[See page 65](#)

Neurology[®]

91 (2)

Neurology 2018;91:e132-104

This information is current as of January 1, 2018

Updated Information & Services

including high resolution figures, can be found at:
<http://n.neurology.org/content/91/2.full>

Permissions & Licensing

Information about reproducing this article in parts (figures, tables) or in its entirety can be found online at:
http://www.neurology.org/about/about_the_journal#permissions

Reprints

Information about ordering reprints can be found online:
<http://n.neurology.org/subscribers/advertise>

Neurology® is the official journal of the American Academy of Neurology. Published continuously since 1951, it is now a weekly with 48 issues per year. Copyright . All rights reserved. Print ISSN: 0028-3878. Online ISSN: 1526-632X.

