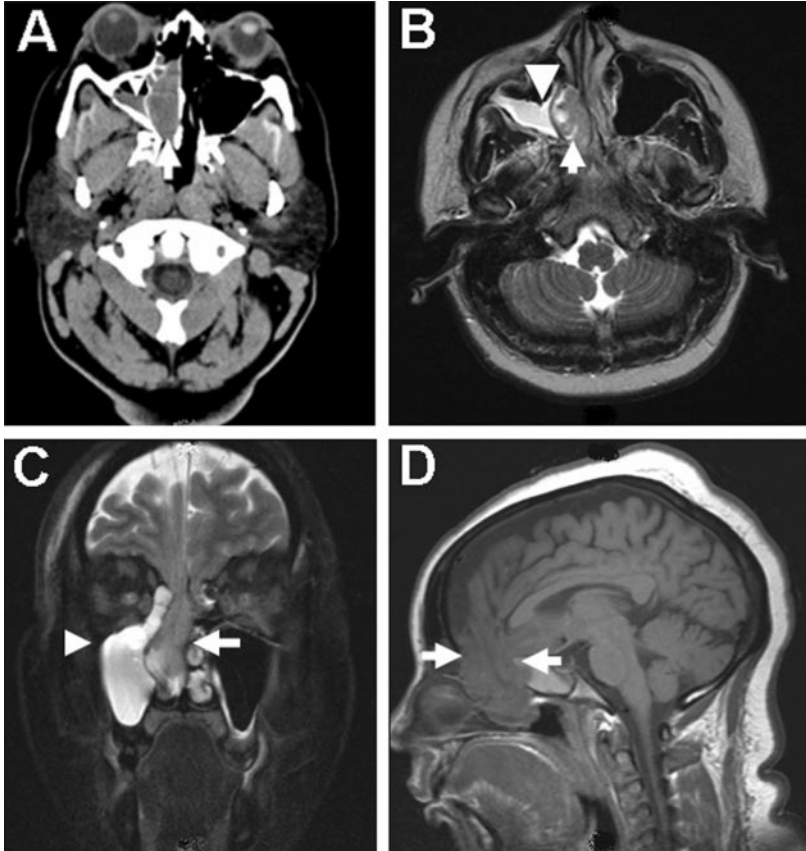


Frontal encephalocele in a middle-aged woman with first seizure

Smells like a seizure to me

Figure Frontal encephalocele in middle-aged woman with a first seizure



(A-C) Axial noncontrast head CT (A) and axial (B) and coronal (C) T2 magnetic resonance images demonstrating brain (arrows) and air-fluid level (arrowheads) in the right nasal cavity and maxillary sinus. (D) Coronal T1 MRI demonstrating large frontal encephalocele (arrows).

A 48-year-old woman with a history only of chronic sinus symptoms presented with her first seizure. Coworkers witnessed a staring spell and speech interruption for approximately 30 seconds followed by a generalized convulsion lasting 2 minutes. After brief postictal confusion, her neurologic examination was normal. Laboratory studies showed no abnormalities. There were no identifiable provoking factors such as infection or sleep deprivation. Noncontrast head CT (figure, A) revealed soft-tissue density in the right nasal cavity and sphenoid, ethmoid, and maxillary sinuses, thought to represent a skull base tumor. An MRI study (figure, B–D) demonstrated a large frontal encephalocele and dysplasia in both inferior frontal lobes. EEG showed intermittent bifrontal rhythmic delta activity. Developmental abnormalities such as encephalocele can present in adulthood as epilepsy that often may be corrected by surgical intervention.^{1,2}

James F. Morley, MD, PhD, Dennis L. Kolson, MD, PhD, Philadelphia, PA.

Disclosure: The authors report no conflicts of interest.

Address correspondence and reprint requests to Dr. James Morley, Department of Neurology, Hospital of the University of Pennsylvania, 3600 Spruce Street, 3 Gates Building, Philadelphia, PA 19104; morleyj@uphs.upenn.edu

1. Hyson M, Andermann F, Olivier A, Melason D. Occult encephaloceles and temporal lobe epilepsy: developmental and acquired lesions in the middle fossa. *Neurology* 1984;34:363–366.
2. Fountas KN, Smith JR, Jenkins PD, Murro AM. Spontaneous motor cortex encephalocele presenting with simple partial seizures and progressive hemiparesis: case report and review of the literature. *Neurosurg Focus* 2005;19:E10.

Neurology[®]

Frontal encephalocele in a middle-aged woman with first seizure: Smells like a seizure to me

James F. Morley and Dennis L. Kolson
Neurology 2008;70;157
DOI 10.1212/01.wnl.0000296822.59839.38

This information is current as of January 7, 2008

Updated Information & Services	including high resolution figures, can be found at: http://n.neurology.org/content/70/2/157.full
References	This article cites 2 articles, 1 of which you can access for free at: http://n.neurology.org/content/70/2/157.full#ref-list-1
Citations	This article has been cited by 1 HighWire-hosted articles: http://n.neurology.org/content/70/2/157.full##otherarticles
Subspecialty Collections	This article, along with others on similar topics, appears in the following collection(s): All Epilepsy/Seizures http://n.neurology.org/cgi/collection/all_epilepsy_seizures CT http://n.neurology.org/cgi/collection/ct MRI http://n.neurology.org/cgi/collection/mri
Permissions & Licensing	Information about reproducing this article in parts (figures, tables) or in its entirety can be found online at: http://www.neurology.org/about/about_the_journal#permissions
Reprints	Information about ordering reprints can be found online: http://n.neurology.org/subscribers/advertise

Neurology® is the official journal of the American Academy of Neurology. Published continuously since 1951, it is now a weekly with 48 issues per year. Copyright . All rights reserved. Print ISSN: 0028-3878. Online ISSN: 1526-632X.

