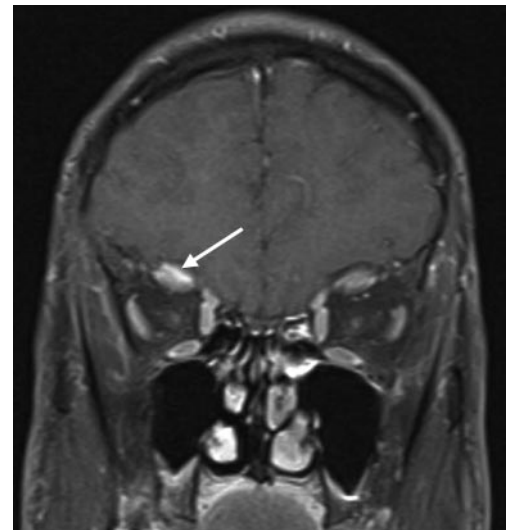


Levator palpebrae myositis

Figure 1 Partial right ptosis



Figure 2 Coronal fat-suppressed gadolinium-enhanced MR scan of orbits showing discrete enhancement of the right levator palpebrae muscle (arrow)



A 45-year-old surgeon presented with a 2-day history of right eye pain and ptosis. Examination showed isolated partial right ptosis (figure 1). MR scan showed discrete enhancement of the right levator palpebrae (figure 2). The pain and ptosis resolved spontaneously over the following week.

Orbital myositis is one of the idiopathic orbital inflammatory syndromes. It presents very rarely as isolated ptosis due to inflammation of the levator palpebrae.¹ Fat-suppressed, enhanced MR of orbits is the imaging modality of choice. Corticosteroid therapy is usually effective but was not required in our patient nor in a previously reported patient with levator myositis.¹

Mohammed A. Almekhlafi, MD, William A. Fletcher, MD, FRCPC, Calgary, Alberta, Canada

Disclosure: The authors report no disclosures.

Address correspondence and reprint requests to Dr. W.A. Fletcher, Department of Clinical Neurosciences, University of Calgary, Foothills Medical Centre, 1403-29 St N.W., Calgary, AB T2N 2T9 Canada; wfletche@ucalgary.ca

1. Wheatcroft S, Elston J. Unilateral ptosis due to isolated involvement of the levator muscle in acute orbital myositis. *Br J Ophthalmol* 1999;83:631–632.

Neurology®

Levator palpebrae myositis

Mohammed A. Almekhlafi and William A. Fletcher

Neurology 2008;71;1202

DOI 10.1212/01.wnl.0000327565.42954.7a

This information is current as of October 6, 2008

Updated Information & Services	including high resolution figures, can be found at: http://n.neurology.org/content/71/15/1202.full
References	This article cites 1 articles, 0 of which you can access for free at: http://n.neurology.org/content/71/15/1202.full#ref-list-1
Subspecialty Collections	This article, along with others on similar topics, appears in the following collection(s): Eyelids http://n.neurology.org/cgi/collection/eyelids MRI http://n.neurology.org/cgi/collection/mri Muscle disease http://n.neurology.org/cgi/collection/muscle_disease
Permissions & Licensing	Information about reproducing this article in parts (figures, tables) or in its entirety can be found online at: http://www.neurology.org/about/about_the_journal#permissions
Reprints	Information about ordering reprints can be found online: http://n.neurology.org/subscribers/advertise

Neurology® is the official journal of the American Academy of Neurology. Published continuously since 1951, it is now a weekly with 48 issues per year. Copyright . All rights reserved. Print ISSN: 0028-3878. Online ISSN: 1526-632X.

