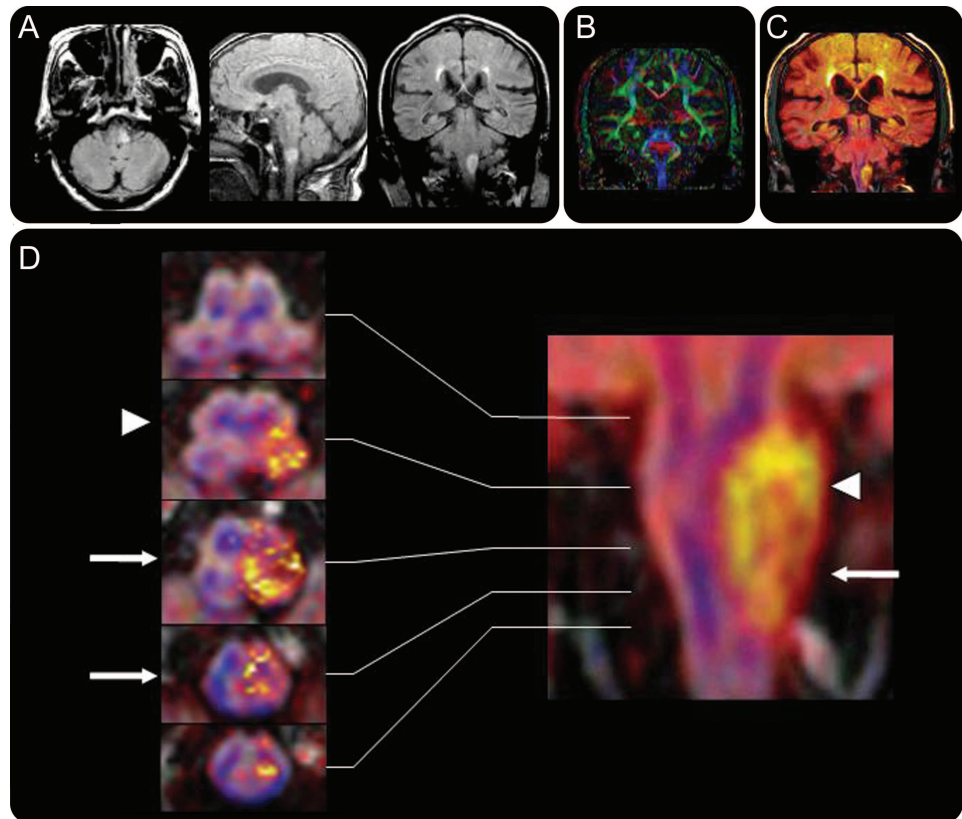


Opalski syndrome

Ipsilateral hemiplegia due to a lateral-medullary infarction

Figure Imaging features of Opalski syndrome



Fluid-attenuated inversion recovery MRI (A). Directionally encoded map with hues reflecting tensor orientation (B). Superimposed images (C, D): a yellow halo represents the infarct and blue lines represent the pyramidal tracts (coronal); the tracts fuse at the decussation (transverse). Caudal extension of the lesion involves the ipsilateral corticospinal tract (arrows) after the decussation (arrowheads).

A 66-year-old man developed left hemiparesis, left Horner sign, and sensory loss on his left face and right limbs, without contralateral hemiparesis or tongue weakness. MRI demonstrated a left lateral-medullary infarction (figure, A). A rare variant of lateral-medullary syndrome, Opalski syndrome,¹ manifests as ipsilateral hemiplegia; however, the anatomic basis is not established.² Therefore, we generated a directionally encoded color map (figure, B) using diffusion tensor imaging techniques and superimposed the images (figure, C and D). These suggest that involvement of the ipsilateral corticospinal tract after the pyramidal decussation, or compression of the decussation, could cause Opalski syndrome.

Shinichiro Nakamura, MD, Makiko Kitami, MD, Yoshiaki Furukawa, MD, Tokyo, Japan

The authors thank Takashi Tabuchi of the Medical Satellite Yaesu Clinic for technical assistance.

Disclosure: The authors report no disclosures.

Address correspondence and reprint requests to Dr. Shinichiro Nakamura, Department of Neurology, Juntendo Tokyo Koto Geriatric Medical Center, 3-3-20, Shinsuna, Koto, Tokyo 136-0075, Japan; nakamura@juntendo.gmc.ac.jp

1. Montaner J, Alvarez-Sabín J. Opalski's syndrome. *J Neurol Neurosurg Psychiatry* 1999;67:688–689.
2. Hermann DM, Jung HH, Bassetti CL. Lateral medullary infarct with alternating and dissociated sensorimotor deficits: Opalski's syndrome revisited. *Eur J Neurol* 2009;16:e72–e74.

Neurology[®]

Opalski syndrome: Ipsilateral hemiplegia due to a lateral-medullary infarction

Shinichiro Nakamura, Makiko Kitami and Yoshiaki Furukawa

Neurology 2010;75;1658

DOI 10.1212/WNL.0b013e3181fb4479

This information is current as of November 1, 2010

Updated Information & Services	including high resolution figures, can be found at: http://n.neurology.org/content/75/18/1658.full
References	This article cites 2 articles, 1 of which you can access for free at: http://n.neurology.org/content/75/18/1658.full#ref-list-1
Subspecialty Collections	This article, along with others on similar topics, appears in the following collection(s): Clinical neurology examination http://n.neurology.org/cgi/collection/clinical_neurology_examination Infarction http://n.neurology.org/cgi/collection/infarction MRI http://n.neurology.org/cgi/collection/mri
Permissions & Licensing	Information about reproducing this article in parts (figures, tables) or in its entirety can be found online at: http://www.neurology.org/about/about_the_journal#permissions
Reprints	Information about ordering reprints can be found online: http://n.neurology.org/subscribers/advertise

Neurology® is the official journal of the American Academy of Neurology. Published continuously since 1951, it is now a weekly with 48 issues per year. Copyright Copyright © 2010 by AAN Enterprises, Inc.. All rights reserved. Print ISSN: 0028-3878. Online ISSN: 1526-632X.

