

# Neurology<sup>®</sup>

## Table of Contents

Volume 80, Number 12, March 19, 2013  
Neurology.org

THE MOST WIDELY READ AND HIGHLY CITED PEER-REVIEWED  
NEUROLOGY JOURNAL






### IN FOCUS

- 1071 Spotlight on the March 19 Issue  
1160 This Week's *Neurology*<sup>®</sup> Podcast

### EDITORIALS

- 1072 Should clinicians care about preclinical animal research?  
*S.D. Silberberg*
- 1074 Are myotonia and epilepsy linked by a chloride channel?  
*S.F. Berkovic and J. Kapur*
- 1076 Blurring of local and remote practice models threatens IOM's future  
*R.G. Emerson and A.M. Husain*

### ARTICLES

- 1078 Novel brain expression of ClC-1 chloride channels and enrichment of *CLCN1* variants in epilepsy  
*T.T. Chen, T.L. Klassen, A.M. Goldman, C. Marini, R. Guerrini, and J.L. Noebels*  
**Editorial, p. 1074**
- 1086 One-year safety and tolerability profile of pridopidine in patients with Huntington disease  
*F. Squitieri, B. Landwehrmeyer, R. Reilmann, A. Rosser, J.G. de Yebenes, A. Prang, J. Ivkovic, J. Bright, and Å. Rembratt*  
 
- 1095 Propagation of cortical spreading depolarization in the human cortex after malignant stroke  
*J. Woitzik, N. Hecht, A. Pinczolits, N. Sandow, S. Major, M.K.L. Winkler, S. Weber-Carstens, C. Dohmen, R. Graf, A.J. Strong, J.P. Dreier, and P. Vajkoczy, For the COSBID study group*  

- 1103 Vestibular compensation in acute unilateral medullary infarction: FDG-PET study  
*S. Becker-Bense, H.-G. Buchholz, C. Best, M. Schreckenberger, P. Bartenstein, and M. Dieterich*

- 1110 Bumetanide prevents transient decreases in muscle force in murine hypokalemic periodic paralysis  
*F. Wu, W. Mi, and S.C. Cannon*
- 1117 Cortical atrophy in ALS is critically associated with neuropsychiatric and cognitive changes  
*E. Mioshi, P. Lillo, B. Yew, S. Hsieh, S. Savage, J.R. Hodges, M.C. Kiernan, and M. Hornberger*
- 1124 Prediction of Alzheimer disease in subjects with amnesic and nonamnesic MCI  
*S.J.B. Vos, I.A. van Rossum, F. Verhey, D.L. Knol, H. Soininen, L.-O. Wahlund, H. Hampel, M. Tsolaki, L. Minthon, G.B. Frisoni, L. Froelich, F. Nobili, W. van der Flier, K. Blennow, R. Wolz, P. Scheltens, and P.J. Visser*
- 1133 Autoimmune chorea in adults  
*O. O'Toole, V.A. Lennon, J.E. Ahlskog, J.Y. Matsumoto, S.J. Pittock, J. Bower, R. Fealey, D.H. Lachance, and A. McKeon*



### GLOBAL PERSPECTIVES

- 1145 Changing face of the Korean Neurological Association  
*K.-H. Jung, H.D. Yang, and B.S. Jeon*

### CLINICAL IMPLICATIONS OF NEUROSCIENCE RESEARCH

- 1148 Pedunculo-pontine nucleus: Functional organization and clinical implications  
*E.E. Benarroch*

### CONTEMPORARY ISSUES

- 1156 Practice patterns for intraoperative neurophysiologic monitoring  
*M.R. Nuwer, B.H. Cohen, and K.M. Shepard*  
**Editorial, p. 1076**

### VIEWS & REVIEWS

- 1161 International Pediatric MS Study Group Clinical Trials Summit: Meeting report  
*T. Chitnis, M. Tardieu, M.P. Amato, B. Banwell, A. Bar-Or, A. Ghezzi, A. Kornberg, L.B. Krupp, D. Pohl, K. Rostasy, S. Tenenbaum, E. Waubant, and E. Wassmer*

CONTINUED

# Neurology<sup>®</sup>

## Table of Contents

*continued*



### CLINICAL/SCIENTIFIC NOTES

- 1169 Niemann-Pick type C is frequent in adult ataxia with cognitive decline and vertical gaze palsy  
*J. Schicks, J.M. vom Hagen, P. Bauer, S. Beck-Wödl, S. Biskup, I. Krägeloh-Mann, L. Schöls, and M. Synofzik*



### NEUROIMAGES

- 1171 Serial carotid MRI identifies rupture of a vulnerable plaque resulting in amaurosis fugax  
*F. Schwarz, A. Bayer-Karpinska, H. Poppert, M. Buchholz, C. Cyran, J. Grimm, A. Helck, K. Nikolaou, C. Opherk, M. Dichgans, and T. Saam*

### RESIDENT & FELLOW SECTION

- e120 Clinical Reasoning: An 85-year-old man with paresthesias and an unsteady gait  
*A.L. Berkowitz, R.M. Jha, J.P. Klein, and A.A. Amato*
- e127 Residency Training: Teaching communication: Residency is not too late  
*S. Maiser*
- e130 Teaching *NeuroImages*: Hypomelanosis of Ito  
*A.S. Khaku, V.S. Hedna, and A. Nayak*

- e131 Teaching *NeuroImages*: "Numb chin syndrome" in a patient with breast cancer  
*S. Oravivattanakul, M. Coffey, L. Teston, and L.R. Rogers*

### WRITECLICK: EDITOR'S CHOICE

- 1173 Cognitive outcome of patients with classic infantile Pompe disease receiving enzyme therapy  
*G.A. Spiridigliozzi, J.H. Heller, P.S. Kishnani; Author Response: A.T. Van der Ploeg, B.J. Ebbink, F.K. Aarsen, C.M. van Gelder, J.M.P. Van den Hout*
- 1173 Chocolate consumption and risk of stroke: A prospective cohort of men and meta-analysis  
*M.R. Walters, C. Williamson, K. Lunn, A. Munteanu*

### CORRECTION

- 1174 Novel brain expression of CLC-1 chloride channels and enrichment of *CLCN1* variants in epilepsy

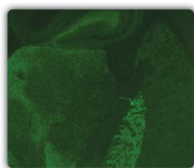
### DEPARTMENTS

- 1175 Book Review
- A37 In the Next Issue of *Neurology*<sup>®</sup>

Podcast at [www.neurology.org](http://www.neurology.org) CME Video Patient Page LOE classification LOE recommendation



[tinyurl.com/neurologyfan](http://tinyurl.com/neurologyfan) [twitter.com/GreenJournal](https://twitter.com/GreenJournal)



**Cover image:** GAD65-IgG detected by indirect immunofluorescence on coronal section of mouse brain revealing characteristic synaptic staining pattern. See page 1133.

**Publish Ahead of Print** articles and editorials go live every Wednesday at 4 pm US Eastern time! Visit [neurology.org](http://neurology.org).

# Neurology®

80 (12)

*Neurology* 2013;80:e130-1175

**This information is current as of January 1, 2013**

**Updated Information & Services**

including high resolution figures, can be found at:  
<http://n.neurology.org/content/80/12.citation.full>

**Permissions & Licensing**

Information about reproducing this article in parts (figures, tables) or in its entirety can be found online at:  
[http://www.neurology.org/about/about\\_the\\_journal#permissions](http://www.neurology.org/about/about_the_journal#permissions)

**Reprints**

Information about ordering reprints can be found online:  
<http://n.neurology.org/subscribers/advertise>

*Neurology*® is the official journal of the American Academy of Neurology. Published continuously since 1951, it is now a weekly with 48 issues per year. Copyright . All rights reserved. Print ISSN: 0028-3878. Online ISSN: 1526-632X.

