

Neurology[®]

Table of Contents

Volume 80, Number 18, April 30, 2013

Neurology.org

THE MOST WIDELY READ AND HIGHLY CITED PEER-REVIEWED
NEUROLOGY JOURNAL





IN FOCUS



- 1625 Spotlight on the April 30 Issue
- 1683 This Week's *Neurology*[®] Podcast

EDITORIALS

- 1626 Ultrasound as the first choice for peripheral nerve imaging?
L. Padua and L.D. Hobson-Webb
- 1628 Stroke prevention in the Stroke Belt: Is the adolescence period the clue?
L. Castilla-Guerra and A.H. Mokdad
- 1630 Outcomes for temporal lobe epilepsy operations may not be equal: A call for an RCT of ATL vs SAH
G.W. Mathern and J.W. Miller
- 1632 Profiling patients
J.G. Merino

ARTICLES

- 1634 Detection of peripheral nerve pathology: Comparison of ultrasound and MRI
C.M. Zaidman, M.J. Seelig, J.C. Baker, S.E. Mackinnon, and A. Pestronk
Editorial, p. 1626
- 1641 Hereditary sensory and autonomic neuropathy type IID caused by an SCN9A mutation
J. Yuan, E. Matsuura, Y. Higuchi, A. Hashiguchi, T. Nakamura, S. Nozuma, Y. Sakiyama, A. Yoshimura, S. Izumo, and H. Takashima
- 1650 Mortality in Guillain-Barré syndrome
B. van den Berg, C. Bunschoten, P.A. van Doorn, and B.C. Jacobs

- 1655 Effect of duration and age at exposure to the Stroke Belt on incident stroke in adulthood
V.J. Howard, L.A. McClure, M.M. Glymour, S.A. Cunningham, D.O. Kleindorfer, M. Crowe, V.G. Wadley, F. Peace, G. Howard, and D.T. Lackland
 **Editorial, p. 1628**

- 1662 α -Synuclein in CSF of patients with severe traumatic brain injury
S. Mondello, A. Buki, D. Italiano, and A. Jeromin
 - 1669 Systematic review and meta-analysis of standard vs selective temporal lobe epilepsy surgery
C.B. Josephson, J. Dykeman, K.M. Fiest, X. Liu, R.M. Sadler, N. Jette, and S. Wiebe
 **Editorial, p. 1630**
 - 1677 Body weight variability in midlife and risk for dementia in old age
R. Ravona-Springer, M. Schnaider-Beeri, and U. Goldbourt
 - 1684 Adherence to a Mediterranean diet and risk of incident cognitive impairment
G. Tsigoulis, S. Judd, A.J. Letter, A.V. Alexandrov, G. Howard, F. Nahab, F.W. Unverzagt, C. Moy, V.J. Howard, B. Kissela, and V.G. Wadley
 - 1693 Peripheral neuropathy incidence in inflammatory bowel disease: A population-based study
J.J. Figueroa, E.V. Loftus, Jr., W.S. Harmsen, P.J.B. Dyck, and C.J. Klein
 - 1698 Safety/feasibility of targeting the substantia nigra with AAV2-neurturin in Parkinson patients
R.T. Bartus, T.L. Baumann, J. Siffert, C.D. Herzog, R. Alterman, N. Boulis, D.A. Turner, M. Stacy, A.E. Lang, A.M. Lozano, and C.W. Olanow

 - 1702 Urine toxicology screening in an urban stroke and TIA population
B. Silver, D. Miller, M. Jankowski, N. Murshed, P. Garcia, P. Penstone, M. Straub, S.P. Logan, A. Sinha, D.C. Morris, A. Katramados, A.N. Russman, P.D. Mitsias, and L.R. Schultz
Editorial, p. 1632
- ### HISTORICAL NEUROLOGY
- 1710 Treating melancholia at home: Theoretical wisdom and grim reality in the career of E.C. Seguin
C.G. Goetz and D.H. Harter

CONTINUED

Neurology[®]

Table of Contents

continued



CLINICAL/SCIENTIFIC NOTES

- 1715 Fatal adenovirus encephalomyeloradiculitis in an umbilical cord stem cell transplant recipient
O.O. Awosika, J.L. Lyons, P. Ciarlini, R.E. Phillips, E.D. Alfson, E.L. Johnson, S. Koo, F. Marty, C. Drew, S. Zaki, R.D. Folkerth, and J.P. Klein



NEUROIMAGES

- 1718 Holohemispheric developmental venous anomaly
A.K. Jung, J.W. Henson, D. Susanto, L.M. Caylor, and M.J. Doherty

RESIDENT & FELLOW SECTION

- e187 Teaching *NeuroImages*: Treatment-resistant rapidly progressive amyloid β -related angiitis
M. Porter, C.R. Newey, and G. Toth
- e189 Teaching *NeuroImages*: Longitudinally extensive transverse myelitis in neuro-Behçet disease
D. Graham, A. McCarthy, E. Kavanagh, K. O'Rourke, and T. Lynch

- e191 Teaching *NeuroImages*: 5-FU-induced acute leukoencephalopathy
S. Mehta, G. Singh, and B. Singh Paul

PATIENT PAGE

- e192 Temporal lobe epilepsy surgery: What is the best approach?
S. Karceski

WRITECLICK: EDITOR'S CHOICE

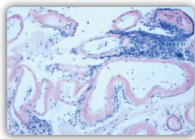
- 1720 Mouse Brain Kaleidoscope
S.R. Brenner; Author Response: F. Calamante
- 1720 Spontaneous intracerebral hemorrhage in Urbach-Wiethe disease
H.A. Teive, E. Ruschel, R.P. Munhoz

DEPARTMENTS

- 1722 Book Review
- C3 In the Next Issue of *Neurology*[®]

Podcast at www.neurology.org CME Video Patient Page LOE classification LOE recommendation

Find us on Facebook tinyurl.com/neurologyfan twitter twitter.com/GreenJournal



Cover image: Meningeal biopsy. Congo red-positive staining material consistent with amyloid in vessel walls surrounded by inflammatory cells and loose granulomas. See page e187.

Publish Ahead of Print articles and editorials go live every Wednesday at 4 pm US Eastern time! Visit neurology.org.

Neurology[®]

80 (18)

Neurology 2013;80:e187-1722

This information is current as of January 1, 2013

Updated Information & Services

including high resolution figures, can be found at:
<http://n.neurology.org/content/80/18.full>

Permissions & Licensing

Information about reproducing this article in parts (figures, tables) or in its entirety can be found online at:
http://www.neurology.org/about/about_the_journal#permissions

Reprints

Information about ordering reprints can be found online:
<http://n.neurology.org/subscribers/advertise>

Neurology® is the official journal of the American Academy of Neurology. Published continuously since 1951, it is now a weekly with 48 issues per year. Copyright . All rights reserved. Print ISSN: 0028-3878. Online ISSN: 1526-632X.

