

Neurology[®]

Table of Contents

Volume 80, Number 21, May 21, 2013
Neurology.org

THE MOST WIDELY READ AND HIGHLY CITED PEER-REVIEWED
NEUROLOGY JOURNAL



IN FOCUS

- 1913 Spotlight on the May 21 issue
- 1988 This Week's *Neurology*[®] Podcast



EDITORIALS

- 1914 Stroke risk after TIA: DWI is only part of the answer
S.B. Coutts and B. Cucchiara
- 1916 Economics of neurology 101: The dismal science meets the dismal prognosis
J.P. Ney and M.R. Nuwer

IN MEMORIAM

- 1918 Robert A. Fishman, MD (1924–2012)
S.L. Hauser and L.P. Rowland

ARTICLES


- 1920 MRI findings and stroke risk in TIA patients with different symptom durations
M. Al-Khaled and J. Eggers
Editorial, p. 1914
- 1927 Low-dose propranolol and exercise capacity in postural tachycardia syndrome: A randomized study
A.C. Arnold, L.E. Okamoto, A. Diedrich, S.Y. Paranjape, S.R. Raj, I. Biaggioni, and A. Gamboa

- 1934 8OHdG is not a biomarker for Huntington disease state or progression
B. Borowsky, J. Warner, B.R. Leavitt, S.J. Tabrizi, R.A.C. Roos, A. Durr, C. Becker, C. Sampaio, A.J. Tobin, and H. Schulman
- 1942 Incidence and prevalence of treated epilepsy among poor health and low-income Americans
K. Kaiboriboon, P.M. Bakaki, S.D. Lhatoo, and S. Koroukian
- 1950 Cervical artery dissection: Trauma and other potential mechanical trigger events
S.T. Engelter, C. Grond-Ginsbach, T.M. Metso, A.J. Metso, M. Kloss, S. Debette, D. Leys, A. Grau, J. Dallongeville, M. Bodenart, Y. Samson, V. Caso, A. Pezzini, L.H. Bonati, V. Thijs, H. Gensicke, J.J. Martin, A. Bersano, E. Touzé, T. Tatlisumak, P.A. Lyrer, and T. Brandt, For the Cervical Artery Dissection and Ischemic Stroke Patients (CADISP) Study Group


- 1958 Syncope and orthostatic intolerance increase risk of brain lesions in migraineurs and controls
M.C. Kruit, R.D. Thijs, M.D. Ferrari, L.J. Launer, M.A. van Buchem, and J.G. van Dijk
- 1966 Nonmelanoma skin cancer is associated with reduced Alzheimer disease risk
R.S. White, R.B. Lipton, C.B. Hall, and J.R. Steiner
- 1973 Interrater reliability of the new criteria for behavioral variant frontotemporal dementia
A.K. LaMarre, K. Rascovsky, A. Bostrom, P. Toofanian, S. Wilkins, S.J. Sha, D.C. Perry, Z.A. Miller, G. Naasan, R.J. Laforce, J. Hagen, L.T. Takada, M.C. Tartaglia, G. Kang, D. Galasko, D.P. Salmon, S.T. Farias, B. Kaur, J.M. Olichney, L. Quitania Park, M.F. Mendez, P.-H. Tsai, E. Teng, B.C. Dickerson, K. Domoto-Reilly, S. McGinnis, B.L. Miller, and J.H. Kramer


GLOBAL PERSPECTIVES

- 1978 Background of the Sociedad Neurológica Argentina: Current state and concerns about neurologic education
J. Correale, R.F. Allegri, and R.F. Pelli-Noble


CLINICAL IMPLICATIONS OF NEUROSCIENCE RESEARCH

- 1981 Synaptic vesicle exocytosis: Molecular mechanisms and clinical implications
E.E. Benarroch


CONTEMPORARY ISSUES

- 1989 The coming crisis: Obtaining care for the growing burden of neurodegenerative conditions
E.R. Dorsey, B.P. George, B. Leff, and A.W. Willis
 **Editorial, p. 1916**

CLINICAL/SCIENTIFIC NOTES

- 1997 Administration of isoflurane-controlled dyskinetic movements caused by anti-NMDAR encephalitis
C. Gumbinger, C. Hametner, B. Wildemann, R. Veltkamp, and J. Bösel


REFLECTIONS: NEUROLOGY AND THE HUMANITIES

- e218 Ode Upon an Open Brain
E.K. Oermann

CONTINUED

Neurology[®]

Table of Contents

continued



NEUROIMAGES

1999 Midbrain neurocysticercal granuloma appearing as "face of panda"
R. Konanki, D.R. Varma, L. Lingappa, and B.H. Shenoy

RESIDENT & FELLOW SECTION

e220 Child Neurology: Diagnosis of Lambert-Eaton myasthenic syndrome in children
B. Morgan-Followell and E. de los Reyes

e223 Clinical Reasoning: A 47-year-old man with progressive gait disturbance and stiffness in his legs
A. Fontes-Villalba, J.-A. Palma, M.A. Fernández-Seara, M.A. Pastor, and P. de Castro

e228 Teaching *NeuroImages*: Susceptibility-weighted MRI: First clue to DAVF complicating sinovenous thrombosis
V.B. Kalra, A. Malhotra, and C.C. Matouk

e229 Teaching *NeuroImages*: "Pancake-like" gadolinium enhancement suggests compressive myelopathy due to spondylosis
E.P. Flanagan, R.W. Marsh, and B.G. Weinshenker

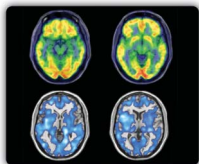
DEPARTMENT

A23 In the Next Issue of *Neurology*[®]

Podcast at www.neurology.org CME Video Patient Page LOE classification LOE recommendation

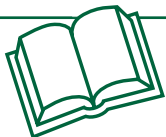


tinyurl.com/neurologyfan twitter.com/GreenJournal



Cover image: Brain MRI-¹⁸F-fluorodeoxy-glucose PET fusion image, axial view and comparative analysis using statistical parametrical mapping, showing a global hypometabolism, involving the cortex and the white matter ($p < 0.01$). See page e223.

Publish Ahead of Print articles and editorials go live every Wednesday at 4 pm US Eastern time! Visit neurology.org.



Neurology[®] Online CME Program

Earn CME while reading *Neurology*. This program is available only to online *Neurology* subscribers. Simply read the articles marked CME, go to www.neurology.org, and click on CME. This will provide all of the information necessary to get started. The American Academy of Neurology (AAN) is accredited by the Accreditation Council for Continuing Medical Education (ACCME) to sponsor continuing medical education for physicians. *Neurology* is planned and produced in accordance with the ACCME Essentials. For more information, contact AAN Member Services at 800-879-1960.

Neurology[®]

80 (21)

Neurology 2013;80:e228-1999

This information is current as of January 1, 2013

Updated Information & Services

including high resolution figures, can be found at:
<http://n.neurology.org/content/80/21.full>

Permissions & Licensing

Information about reproducing this article in parts (figures, tables) or in its entirety can be found online at:
http://www.neurology.org/about/about_the_journal#permissions

Reprints

Information about ordering reprints can be found online:
<http://n.neurology.org/subscribers/advertise>

Neurology® is the official journal of the American Academy of Neurology. Published continuously since 1951, it is now a weekly with 48 issues per year. Copyright . All rights reserved. Print ISSN: 0028-3878. Online ISSN: 1526-632X.

