

Neurology[®]

Table of Contents

Volume 80, Number 8, February 19, 2013

Neurology.org

THE MOST WIDELY READ AND HIGHLY CITED PEER-REVIEWED
NEUROLOGY JOURNAL




IN FOCUS


- 693 Spotlight on the February 19 Issue
- 772 This Week's *Neurology*[®] Podcast

EDITORIALS

- 694 How do we fashion better trials for neurostimulator studies in migraine?
E. Asano and P.J. Goadsby
- 695 Stroke after Alzheimer disease: I have more bad news
S.M. Greenberg

ARTICLES


- 697 Migraine prevention with a supraorbital transcutaneous stimulator: A randomized controlled trial
J. Schoenen, B. Vandersmissen, S. Jeanette, L. Herroelen, M. Vandenheede, P. Gérard, and D. Magis
 **Editorial, p. 694**
- 705 Alzheimer disease and risk of stroke: A population-based cohort study
N.-F. Chi, L.-N. Chien, H.-L. Ku, C.-J. Hu, and H.-Y. Chiou
Editorial, p. 695
- 712 Microvascular brain pathology and late-life motor impairment
A.S. Buchman, L. Yu, P.A. Boyle, S.R. Levine, S. Nag, J.A. Schneider, and D.A. Bennett
- 717 Comment: Microvascular disease and motoric dysfunction
J. Vergheze
- 719 Sex differences and hemoglobin levels in relation to stroke outcomes
W.T. Kimberly, F.O. Lima, S. O'Connor, and K.L. Furie
- 725 Skin sympathetic fiber α -synuclein deposits: A potential biomarker for pure autonomic failure
V. Donadio, A. Incensi, P. Cortelli, M.P. Giannoccaro, M.A. Jaber, A. Baruzzi, and R. Liguori
- 733 Sarcomeric dysfunction contributes to muscle weakness in facioscapulohumeral muscular dystrophy
S. Lassche, G.J.M. Stienen, T.C. Irving, S.M. van der Maarel, N.C. Voermans, G.W. Padberg, H. Granzier, B.G.M. van Engelen, and C.A.C. Ottenheijm

- 738 Characteristics and determinants of restless legs syndrome in pregnancy: A prospective study
A. Hübner, A. Krafft, S. Gadiant, E. Werth, R. Zimmermann, and C.L. Bassetti

- 743 Hepatic mitochondrial dysfunction in manifest and premanifest Huntington disease
S.H. Stüwe, O. Goetze, C. Lukas, P. Klotz, R. Hoffmann, M. Banasch, M. Orth, W.E. Schmidt, R. Gold, and C. Saft
- 747 Neuroanatomical target theory as a predictive model for radiation-induced cognitive decline
A.M. Peiffer, C.M. Leyrer, D.M. Greene-Schloesser, E. Shing, W.T. Kearns, W.H. Hinson, S.B. Tatter, E.H. Ip, S.R. Rapp, M.E. Robbins, E.G. Shaw, and M.D. Chan


GLOBAL PERSPECTIVES

- 754 The global fund for epilepsy: A proposal
J.H. Chin

CLINICAL IMPLICATIONS OF NEUROSCIENCE RESEARCH

- 756 Cation-chloride cotransporters in the nervous system: General features and clinical correlations
E.E. Benarroch


CONTEMPORARY ISSUES: INNOVATIONS IN EDUCATION

- 764 Estimating and communicating prognosis in advanced neurologic disease
R.G. Holloway, R. Gramling, and A.G. Kelly


CLINICAL/SCIENTIFIC NOTES

- 773 Peripheral neuropathy due to dinitrophenol used for weight loss: Something old, something new
L. Phillips and M.A. Singer

NEUROIMAGES

- 775 High-resolution MR technique can distinguish moyamoya disease from atherosclerotic occlusion
J.-M. Kim, K.-H. Jung, C.-H. Sohn, J. Park, J. Moon, M.H. Han, and J.-K. Roh

CONTINUED


Neurology[®]

Table of Contents

continued



RESIDENT & FELLOW SECTION

- e78 Emerging Subspecialties in Neurology: Global health
O.K. Siddiqi, I.J. Koralnik, M. Atadzhanov, and
G.L. Birbeck
- e81 Teaching Video NeuroImages: Cold-induced eyelid
myotonia
Y.-J. Wu and C.-C. Lin

- e82 Teaching NeuroImages: Fungus in the brain:
Coccidioidomycosis meningoencephalitis
D.M. Goldenholz, N. Mehra, B. Dahlin, S.H. Cohen, and
V.L. Wheelock

WRITECLICK: EDITOR'S CHOICE

- 777 Multiple sclerosis or multiple possibilities: The
continuing problem of misdiagnosis
F. Deisenhammer; Author Response: R. A. Rudick, A. Miller
- 777 Do acute phase markers explain body temperature
and brain temperature after ischemic stroke?
O. Kano, K. Ikeda, Y. Iwasaki; Author Response:
J. M. Wardlaw, W. N. Whiteley, R. Thomas, G. Lowe,
A. Rumley, B. Karaszewski, P. Armitage, I. Marshall,
K. Lymer, M. Dennis

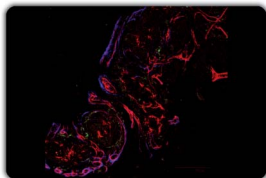
DEPARTMENT

- A33 In the Next Issue of *Neurology*[®]

 Podcast at www.neurology.org  CME  Video  Patient Page  LOE classification  LOE recommendation

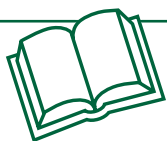


tinyurl.com/neurologyfan  twitter.com/GreenJournal



Cover image: A confocal 3-dimensional study of leg sweat gland cholinergic innervation in a patient with acquired peripheral autonomic neuropathy (in green VIP staining for cholinergic fibers; in blue staining for collagen IV and in red ULEX staining for sweat gland tubules). See page 725.

Publish Ahead of Print articles and editorials go live every Wednesday at 4 pm US Eastern time! Visit neurology.org.



Neurology[®] Online CME Program

Earn CME while reading *Neurology*. This program is available only to online *Neurology* subscribers. Simply read the articles marked CME, go to www.neurology.org, and click on CME. This will provide all of the information necessary to get started. The American Academy of Neurology (AAN) is accredited by the Accreditation Council for Continuing Medical Education (ACCME) to sponsor continuing medical education for physicians. *Neurology* is planned and produced in accordance with the ACCME Essentials. For more information, contact AAN Member Services at 800-879-1960.

Neurology[®]

80 (8)

Neurology 2013;80:e78-778

This information is current as of January 1, 2013

Updated Information & Services

including high resolution figures, can be found at:
<http://n.neurology.org/content/80/8.citation.full>

Permissions & Licensing

Information about reproducing this article in parts (figures, tables) or in its entirety can be found online at:
http://www.neurology.org/about/about_the_journal#permissions

Reprints

Information about ordering reprints can be found online:
<http://n.neurology.org/subscribers/advertise>

Neurology® is the official journal of the American Academy of Neurology. Published continuously since 1951, it is now a weekly with 48 issues per year. Copyright . All rights reserved. Print ISSN: 0028-3878. Online ISSN: 1526-632X.

