

Neurology[®]

Table of Contents

Volume 81, Number 12, September 17, 2013
Neurology.org

THE MOST WIDELY READ AND HIGHLY CITED PEER-REVIEWED
NEUROLOGY JOURNAL



IN FOCUS

- 1025 Spotlight on the September 17 Issue
- 1063 This Week's *Neurology*[®] Podcast


EDITORIALS

- 1026 Freezing of gait in PD has a REM correlate:
Twice cursed with a shared pathophysiology?
L.A. Hershey and D.G. Lichter
- 1028 What happens to cognitive function following surgery
for hypothalamic hamartoma?
A.S. Harvey and J.V. Rosenfeld

ARTICLES

- 1030 Increased REM sleep without atonia in Parkinson
disease with freezing of gait
*A. Videnovic, C. Marlin, L. Alibiglou, P.J. Planetta,
D.E. Vaillancourt, and C.D. MacKinnon*
 Editorial, p. 1026
- 1036 Modeling depression in Parkinson disease: Disease-
specific and nonspecific risk factors
*A.F.G. Leentjens, A.J.H. Moonen, K. Dujardin, L. Marsh,
P. Martinez-Martin, I.H. Richard, S.E. Starkstein, and
S. Köhler*
- 1044 Cognitive functioning before and after surgical
resection for hypothalamic hamartoma and epilepsy
*J.V. Wethe, G.P. Prigatano, J. Gray, K. Chapple,
H.L. Rekate, and J.F. Kerrigan*
 Editorial, p. 1028
- 1051 Cardiovascular fitness and later risk of epilepsy:
A Swedish population-based cohort study
*J. Nyberg, M.A.I. Åberg, K. Torén, M. Nilsson,
E. Ben-Menachem, and H.G. Kuhn*
- 1058 Late-onset anti-NMDA receptor encephalitis
*M.J. Titulaer, L. McCracken, I. Gabilondo, T. Iizuka,
I. Kawachi, L. Bataller, A. Torrents, M.R. Rosenfeld,
R. Balice-Gordon, F. Graus, and J. Dalmau*

- 1064 Both low and high temperature may increase the risk
of stroke mortality
*R. Chen, C. Wang, X. Meng, H. Chen, T.Q. Thach,
C.-M. Wong, and H. Kan*
- 1069 Comment: Temperature and risk of stroke mortality
in China
M.L. Bell

- 1071 Helsinki model cut stroke thrombolysis delays to
25 minutes in Melbourne in only 4 months
*A. Meretoja, L. Weir, M. Ugalde, N. Yassi, B. Yan, P. Hand,
M. Truesdale, S.M. Davis, and B.C.V. Campbell*


GLOBAL PERSPECTIVES

- 1077 Dementia in China: Current status
J. Liu, L.-n. Wang, and J.-p. Tan


CLINICAL IMPLICATIONS OF NEUROSCIENCE RESEARCH

- 1079 Microglia: Multiple roles in surveillance, circuit shaping,
and response to injury
E.E. Benarroch

VIEWS & REVIEWS

- 1089 Recognition and management of stroke in young adults
and adolescents
*A.B. Singhal, J. Biller, M.S. Elkind, H.J. Fullerton,
E.C. Jauch, S.J. Kittner, D.A. Levine, and S.R. Levine*


CLINICAL/SCIENTIFIC NOTES

- 1098 Complex movement disorders in fatal familial insomnia:
A clinical and genetic discussion
*J.L. Pedrosa, W.B.V. de Rezende Pinto, P.V. Sgobbi de
Souza, I.F. Ricarte, M.C. Landemberger, V.R. Martins,
L.B.F. Prado, G.F. Prado, and O.G.P. Barsottini*

- 1099 De novo Huntington disease caused by 26–44 cag
repeat expansion on a low-risk haplotype
*G. Houge, O. Bruland, I. Bjørnevoll, M.R. Hayden, and
A. Semaka*

NEUROIMAGES

- 1101 Vertebral artery dissection causing an acute C5
radiculopathy
C. Quinn and J. Salameh

RESIDENT & FELLOW SECTION

- e89 Clinical Reasoning: A 64-year-old woman with
progressive quadriparesis
A. Gummavelli, J.E. Motelow, and N.S. Narayanan
- e95 Teaching Video NeuroImages: Complicated scapular
winging
M. Monforte, E. Ricci, E. Iannaccone, and G. Tasca


CONTINUED

Neurology[®]

Table of Contents

continued



e96 Teaching *NeuroImages*: Polymyalgia rheumatica and giant cell arteritis
D.T. Ginat and N. Rastalsky

WRITECLICK: EDITOR'S CHOICE

1102 Association between performance on neurology in-training and certification examinations
C. Tian, D.L. Gilbert

1102 Migraine prevention with a supraorbital transcutaneous stimulator: A randomized controlled trial
F.-g. Meng, J.-g. Zhang; Author Response: J. Schoenen, B. Vandersmissen, L. Herroelen, M. Vandenheede, P. Gerard, D. Magis

DEPARTMENTS

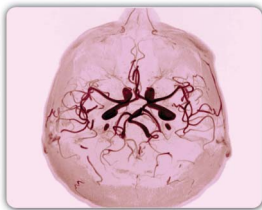
1104 Book Review

A45 In the Next Issue of *Neurology*[®]

Podcast at www.neurology.org CME Video Patient Page LOE classification LOE recommendation



tinyurl.com/neurologyfan twitter.com/GreenJournal



Cover image: 3D maximal intensity projection MRA image showing severe narrowing of the anterior branch of the right superficial temporal artery. Colorized by Graphics Editor, Cindy Abair. See page e96.

Look for **Publish Ahead of Print** articles and editorials under the Ahead of Print tab at Neurology.org



Neurology[®] Online CME Program

Earn CME while reading *Neurology*. This program is available only to online *Neurology* subscribers. Simply read the articles marked CME, go to www.neurology.org, and click on CME. This will provide all of the information necessary to get started. The American Academy of Neurology (AAN) is accredited by the Accreditation Council for Continuing Medical Education (ACCME) to sponsor continuing medical education for physicians. *Neurology* is planned and produced in accordance with the ACCME Essentials. For more information, contact AAN Member Services at 800-879-1960.

Neurology®

81 (12)

Neurology 2013;81:e96-1105

This information is current as of January 1, 2013

Updated Information & Services

including high resolution figures, can be found at:
<http://n.neurology.org/content/81/12.full>

Permissions & Licensing

Information about reproducing this article in parts (figures, tables) or in its entirety can be found online at:
http://www.neurology.org/about/about_the_journal#permissions

Reprints

Information about ordering reprints can be found online:
<http://n.neurology.org/subscribers/advertise>

Neurology® is the official journal of the American Academy of Neurology. Published continuously since 1951, it is now a weekly with 48 issues per year. Copyright . All rights reserved. Print ISSN: 0028-3878. Online ISSN: 1526-632X.

