

# Neurology<sup>®</sup>

## Table of Contents

Volume 82, Number 17, April 29, 2014  
Neurology.org

THE MOST WIDELY READ AND HIGHLY CITED PEER-REVIEWED  
NEUROLOGY JOURNAL



### IN FOCUS

- 1483 Spotlight on the April 29 Issue
- 1555 This Week's *Neurology*<sup>®</sup> Podcast

### EDITORIALS

- 1484 Natalizumab discontinuation in the increasing complexity of multiple sclerosis therapy  
*M.P. Sormani and N.D. Stefano*
- 1486 Myoclonic atonic epilepsy: Another generalized epilepsy syndrome that is "not so" generalized  
*J.M. Zempel and T. Mano*
- 1488 Can fall of blood pressure prevent falls in Parkinson disease?  
*P. Hedera and J.H. Friedman*

### IN MEMORIAM

- 1490 Hanns Christian Hopf, MD (1934-2013)  
*L. Gutmann and R. Dengler*

### ARTICLES

- 1491 MS disease activity in RESTORE: A randomized 24-week natalizumab treatment interruption study  
*R.J. Fox, B.A.C. Cree, J. De Sèze, R. Gold, H.-P. Hartung, D. Jeffery, L. Kappos, M. Kaufman, X. Montalbán, B. Weinstock-Guttman, B. Anderson, A. Natarajan, B. Ticho, and P. Duda*  
 Editorial, p. 1484
- 1499 Natalizumab in progressive MS: Results of an open-label, phase 2A, proof-of-concept trial  
*J. Romme Christensen, R. Ratzer, L. Börnsen, M. Lyksborg, E. Garde, T.B. Dyrby, H.R. Siebner, P.S. Sorensen, and F. Sellebjerg*
- 1508 EEG-fMRI in myoclonic astatic epilepsy (Dosee syndrome)  
*F. Moeller, K. Groening, J. Moehring, H. Muhle, S. Wolff, O. Jansen, U. Stephani, and M. Siniatchkin*  
Editorial, p. 1486

- 1514 Modifiable cardiovascular risk factors and axial motor impairments in Parkinson disease  
*V. Kotagal, R.L. Albin, M.L.T.M. Müller, R.A. Koeppe, K.A. Frey, and N.I. Bohnen*  
Editorial, p. 1488

- 1521 Progressive encephalomyelitis with rigidity and myoclonus: A new variant with DPPX antibodies  
*B. Balint, S. Jarius, S. Nagel, U. Haberkorn, C. Probst, I.M. Blöcker, R. Bahtz, L. Komorowski, W. Stöcker, A. Kastrup, M. Kuthe, and H.-M. Meinck*

- 1529 Seoul criteria for PiB(-) subcortical vascular dementia based on clinical and MRI variables  
*G.H. Kim, J.H. Lee, S.W. Seo, B.S. Ye, H. Cho, H.J. Kim, Y. Noh, C.W. Yoon, J.H. Chin, S.J. Oh, J.S. Kim, Y.S. Choe, K.H. Lee, S.T. Kim, J.H. Jeong, and D.L. Na*

- 1536 Clinical trial of an inhibitor of RAGE-A $\beta$  interactions in Alzheimer disease  
*D. Galasko, J. Bell, J.Y. Mancuso, J.W. Kupiec, M.N. Sabbagh, C. van Dyck, R.G. Thomas, and P.S. Aisen, For the Alzheimer's Disease Cooperative Study*

- 1543 Dementia and dependence: Do modifiable risk factors delay disability?  
*P.M. Rist, B.D. Capistrant, Q. Wu, J.R. Marden, and M.M. Glymour*

- 1551 Chronic meralgia paresthetica and neurectomy: A clinical pathologic study  
*S.E. Berini, R.J. Spinner, M.E. Jentoft, J.K. Engelstad, N.P. Staff, N. Suanprasert, P.J.B. Dyck, and C.J. Klein*

### SPECIAL ARTICLE

- 1556 Systematic review: Efficacy and safety of medical marijuana in selected neurologic disorders: Report of the Guideline Development Subcommittee of the American Academy of Neurology  
*B.S. Koppel, J.C.M. Brust, T. Fife, J. Bronstein, S. Youssof, G. Gronseth, and D. Gloss*

CONTINUED

# Neurology<sup>®</sup>

## Table of Contents

*continued*




### CLINICAL/SCIENTIFIC NOTES

- 1564 Rheumatoid meningitis presenting with stroke-like episodes  
*P. Bourgeois, J. Rivest, and C. Bocti*

### NEUROIMAGES

- 1566 Ophthalmic nerve hypertrophy in chronic inflammatory demyelinating polyradiculoneuropathy  
*A. Okuzumi, T. Hatano, T. Nakahara, K. Yokoyama, and N. Hattori*

### RESIDENT & FELLOW SECTION

- e147 Mystery Case: Pendular see-saw nystagmus as a delayed complication of traumatic brain injury  
*F. Yunusov, J.-H. Park, Y.E. Huh, H.-J. Kim, and J.-S. Kim*  

- e149 Pearls & Oysters: Rapidly progressive dementia: Prions or immunomediated?  
*F. Cavallieri, J. Mandrioli, M. Tondelli, F. Vitetta, C. Stipa, S. Vallone, E. Georgouloupoulou, F. Barbi, R. Liguori, P. Parchi, and P. Nichelli*
- e153 Teaching NeuroImages: Sonographic “retrobulbar spot sign” in differentiating etiologies of sudden visual loss  
*S. Faissner, C. Grunwald, S.H. Meves, R. Gold, and C. Krogias*

### PATIENT PAGE

- e155 The RESTORE trial: What did we learn about multiple sclerosis?  
*S. Karceski*

### WRITECLICK: EDITOR'S CHOICE

- 1568 How experienced community neurologists make diagnoses during clinical encounters  
*N.K. Sethi; Author Response: A. Dhand, J. Engstrom, G. Dhaliwal*
- 1568 Gait speed in Parkinson disease correlates with cholinergic degeneration  
*R. Mehanna; Author Response: N. Bohnen, M. Sarter, M. Muller, W. Dauer, R. Albin, A. Arbor*

### CORRECTIONS

- 1569 Tumefactive MS lesions under fingolimod: A case report and literature review
- 1570 Structural and functional brain connectivity in presymptomatic familial frontotemporal dementia

### DEPARTMENT

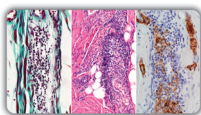
- A20 In the Next Issue of *Neurology*<sup>®</sup>

 Podcast at [Neurology.org](http://Neurology.org)  CME  Video  Patient Page  LOE classification  LOE recommendation



Find us on Facebook

[tinyurl.com/neurologyfan](http://tinyurl.com/neurologyfan)  [twitter.com/GreenJournal](https://twitter.com/GreenJournal)



**Cover image:** Characteristic findings in lateral femoral cutaneous nerve biopsies from patients with chronic meralgia paresthetica and having undergone neurectomy: Trichrome paraffin preparation, hematoxylin & eosin stain, and smooth muscle actin preparation. See page 1551.

Look for **Publish Ahead of Print** articles and editorials under the Ahead of Print tab at [Neurology.org](http://Neurology.org)

# Neurology<sup>®</sup>

82 (17)

*Neurology* 2014;82:e155-1570

**This information is current as of January 1, 2014**

**Updated Information & Services**

including high resolution figures, can be found at:  
<http://n.neurology.org/content/82/17.full>

**Permissions & Licensing**

Information about reproducing this article in parts (figures, tables) or in its entirety can be found online at:  
[http://www.neurology.org/about/about\\_the\\_journal#permissions](http://www.neurology.org/about/about_the_journal#permissions)

**Reprints**

Information about ordering reprints can be found online:  
<http://n.neurology.org/subscribers/advertise>

*Neurology*® is the official journal of the American Academy of Neurology. Published continuously since 1951, it is now a weekly with 48 issues per year. Copyright . All rights reserved. Print ISSN: 0028-3878. Online ISSN: 1526-632X.

