

Neurology[®]

Table of Contents

Volume 85, Number 14, October 6, 2015

Neurology.org

THE MOST WIDELY READ AND HIGHLY CITED PEER-REVIEWED
NEUROLOGY JOURNAL



IN FOCUS

- 1187 Spotlight on the October 6 Issue
- 1256 This Week's *Neurology*[®] Podcast

EDITORIALS

- 1188 *Neurology Resident & Fellow Section: The second decade begins*
M.S.V. Elkind, J.J. Millichap, and R.E. Strowd III
- 1191 [An] enumeration shall be made...
B.J. Traynor and C. Angelini
- 1193 Do prenatal sex hormones modulate MS risk?
R.M. Lucas and B. Banwell

ARTICLES

- 1195 Prevalence of neurogenetic disorders in the North of England
D. Bargiela, P. Yu-Wai-Man, M. Keogh, R. Horvath, and P.F. Chinnery
OPEN Editorial, p. 1191
- 1202 Charcot-Marie-Tooth disease: New insights from skin biopsy
F. Manganelli, M. Nolano, C. Pisciotta, V. Provitera, G.M. Fabrizi, T. Cavallaro, A. Stancanelli, G. Caporaso, M.E. Shy, and L. Santoro
- 1209 The 2D:4D ratio, a proxy for prenatal androgen levels, differs in men with and without MS
R. Bove, M.T. Malik, C. Diaz-Cruz, A. Chua, T.J. Saraceno, D. Bargiela, E. Greeke, B.I. Glanz, B.C. Healy, and T. Chitnis
Editorial, p. 1193
- 1214 Interictal, circulating sphingolipids in women with episodic migraine: A case-control study
B.L. Peterlin, M.M. Mielke, A.M. Dickens, S. Chatterjee, P. Dash, G. Alexander, R.V.A. Vieira, V.V.R. Bandaru, J.M. Dorskind, G.E. Tietjen, and N.H. Haughey
- 1222 Comment: Altered sphingolipid metabolism—A marker for episodic migraine?
K. Ekblom

- 1224 Claustrium damage and refractory status epilepticus following febrile illness
S. Meletti, J. Slonkova, I. Mareckova, G. Monti, N. Specchio, P. Hon, G. Giovannini, V. Marcian, A. Chiari, P. Krupa, N. Pietrafusa, D. Berankova, and M. Bar
- 1233 Ictal changes in parasympathetic tone: Prediction of postictal oxygen desaturation
W. Szurhaj, A.-C. Troussière, R. Logier, P. Derambure, L. Tyvaert, F. Semah, P. Ryvlin, and J. De Jonckheere
- 1240 Detailed comparison of amyloid PET and CSF biomarkers for identifying early Alzheimer disease
S. Palmqvist, H. Zetterberg, N. Mattsson, P. Johansson, for the Alzheimer's Disease Neuroimaging Initiative, L. Minthon, K. Blennow, M. Olsson, and for the Swedish BioFINDER study group, and O. Hansson
OPEN
- 1250 Evaluation of outcome measures for neurogenic claudication: A patient-centered approach
J.D. Markman, J.S. Gewandter, M.E. Frazer, C. Pittman, X. Cai, K.V. Patel, B.S. Jahromi, R.H. Dworkin, L.B. Burke, and J.T. Farrar

CLINICAL/SCIENTIFIC NOTES

- 1257 Electrocortical therapy for motion sickness
Q. Arshad, N. Cerchiali, U. Goga, Y. Nigmatullina, R.E. Roberts, A.P. Casani, J.F. Golding, M.A. Gresty, and A.M. Bronstein
OPEN
- 1259 TPP1 deficiency: Rare cause of isolated childhood-onset progressive ataxia
M.E. Dy, K.B. Sims, and J. Friedman

RESIDENT & FELLOW SECTION

- e104 Clinical Reasoning: A 68-year-old man with a history of lung cancer presenting with right-sided weakness and aphasia
A. Gupta, M.R. Etherton, K. McKee, J.M. Baker, S. Izzy, and S.K. Feske

CONTINUED

Neurology[®]

Table of Contents

continued



e108 Teaching *NeuroImages*: Subacute encephalopathy in a young woman with *THTR2* gene mutation
E. Sechi, A. Addis, G. Fadda, L. Minafra, V. Bravatà, and G. Sechi

WRITECLICK[®] EDITOR'S CHOICE

1262 Motor evoked potential polyphasia: A novel endophenotype of idiopathic generalized epilepsy
J. Valls-Sole, U. Ziemann: Author Response: A.D. Pawley, M. Richardson

1262 Anti-MOG antibodies with longitudinally extensive transverse myelitis preceded by CLIPPERS
G. Taieb, P. Labauge: Author Response: M. Symmonds, M. Isabel Leite, U.G. Schulz

CORRECTION

1263 Pseudo-Foster-Kennedy syndrome with optic nerve compression by the gyrus rectus

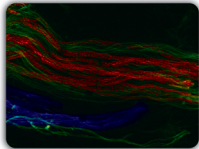
DEPARTMENT

In the Next Issue of *Neurology*[®]

Podcast at Neurology.org CME Video Patient Page LOE classification LOE recommendation



tinyurl.com/neurologyfan twitter.com/GreenJournal



Cover image: Confocal image of glabrous skin in a patient with CMT showing fragmentation of myelin. See page 1202.

Look for **Publish Ahead of Print** articles and editorials under the Ahead of Print tab at Neurology.org



Neurology[®] Online CME Program

Earn CME while reading *Neurology*. This program is available only to online *Neurology* subscribers. Simply read the articles marked CME, go to www.neurology.org, and click on CME. This will provide all of the information necessary to get started. The American Academy of Neurology (AAN) is accredited by the Accreditation Council for Continuing Medical Education (ACCME) to sponsor continuing medical education for physicians. *Neurology* is planned and produced in accordance with the ACCME Essentials. For more information, contact AAN Member Services at 800-879-1960.

Neurology[®]

85 (14)

Neurology 2015;85:e104-1263

This information is current as of January 1, 2015

Updated Information & Services

including high resolution figures, can be found at:
<http://n.neurology.org/content/85/14.full>

Permissions & Licensing

Information about reproducing this article in parts (figures, tables) or in its entirety can be found online at:
http://www.neurology.org/about/about_the_journal#permissions

Reprints

Information about ordering reprints can be found online:
<http://n.neurology.org/subscribers/advertise>

Neurology® is the official journal of the American Academy of Neurology. Published continuously since 1951, it is now a weekly with 48 issues per year. Copyright . All rights reserved. Print ISSN: 0028-3878. Online ISSN: 1526-632X.

