

Neurology[®]

Table of Contents

Volume 85, Number 16, October 20, 2015
Neurology.org

THE MOST WIDELY READ AND HIGHLY CITED PEER-REVIEWED
NEUROLOGY JOURNAL







IN FOCUS

- 1357 Spotlight on the October 20 Issue
- 1375 This Week's *Neurology*[®] Podcast


EDITORIALS

- 1358 Early and delayed orthostatic hypotension: Time tells
H. Kaufmann and G. Jacob
- 1360 Cerebral hemorrhage following thrombolytic therapy for stroke: Are neutrophils really neutral?
L. Roever and S.R. Levine

ARTICLES

- 1362 Clinical implications of delayed orthostatic hypotension: A 10-year follow-up study
C.H. Gibbons and R. Freeman
 Editorial, p. 1358
- 1368 Acetyl-DL-leucine in Niemann-Pick type C: A case series
T. Bremova, V. Malinová, Y. Amraoui, E. Mengel, J. Reinke, M. Kolníková, and M. Strupp

- 1376 Motion discrimination in dementia with Lewy bodies and Alzheimer disease
K.M. Landy, D.P. Salmon, D. Galasko, J.V. Filoteo, E.K. Festa, W.C. Heindel, L.A. Hansen, and J.M. Hamilton
- 1383 A randomized, double-blind, placebo-controlled trial of resveratrol for Alzheimer disease
R.S. Turner, R.G. Thomas, S. Craft, C.H. van Dyck, J. Mintzer, B.A. Reynolds, J.B. Brewer, R.A. Rissman, R. Raman, and P.S. Aisen, for the Alzheimer's Disease Cooperative Study
 OPEN
- 1392 Interaction between years of education and APOE ε4 status on frontal and temporal metabolism
E.M. Arenaza-Urquijo, J. Gonneaud, M. Fouquet, A. Perrotin, F. Mézenge, B. Landeau, S. Egret, V. De la Sayette, B. Desgranges, and G. Chételat
 OPEN


- 1400 Immunoglobulin G4-related pathologic features in inflammatory neuropathies
K. Ohyama, H. Koike, M. Takahashi, Y. Kawagashira, M. Iijima, H. Watanabe, and G. Sobue

- 1408 Higher neutrophil counts before thrombolysis for cerebral ischemia predict worse outcomes
I. Maestrini, D. Strbian, S. Gautier, E. Haapaniemi, S. Moulin, T. Sairanen, N. Dequatre-Ponchelle, G. Sibolt, C. Cordonnier, S. Melkas, D. Leys, T. Tatlisumak, and R. Bordet
 Editorial, p. 1360

CLINICAL IMPLICATIONS OF NEUROSCIENCE RESEARCH

- 1417 Extracellular matrix in the CNS: Dynamic structure and clinical correlations
E.E. Benarroch

CLINICAL/SCIENTIFIC NOTES

- 1428 Bilateral INO: Unusual patterns of saccadic intrusions
J. Otero-Millan, D.R. Benavides, D.S. Zee, and A. Kheradmand


VISIONS

- 1430 Picturing the torment of cluster headache
C.F. Slattery and J.M. Schott

RESIDENT & FELLOW SECTION

- e124 Clinical Reasoning: A 58-year-old man with right facial numbness
K.A. Egan, J.L. Sevush-Garcy, E. Lukovic, A.Z. Sherzai, and S. Yaghi
- e128 Teaching NeuroImages: Dyke-Davidoff-Masson in Sturge-Weber syndrome
C.A. Zamora and M. Kontzialis

CONTINUED

Neurology[®]

Table of Contents

continued



WRITECLICK[®] EDITOR'S CHOICE

1432 Evidence-based guideline summary: Evaluation, diagnosis, and management of congenital muscular dystrophy: Report of the Guideline Development Subcommittee of the American Academy of Neurology and the Practice Issues Review Panel of the American Association of Neuromuscular & Electrodiagnostic Medicine
G. Haliloglu, H. Topaloglu; Author Response: P.B. Kang, L. Morrison, S.T. Iannaccone, R.J. Graham, C.G. Bönnemann, A. Rutkowski, J. Hornyak, C.H. Wang, K. North

1433 Neuropsychological outcome after deep brain stimulation for Parkinson disease
J.M. Bronstein; Author Response: V.J. Odekerken, J.A. Boel, B.A. Schmand, R.M. de Bie

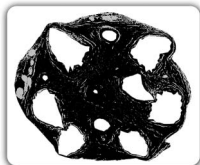
DEPARTMENT

In the Next Issue of *Neurology*[®]

Podcast at Neurology.org CME Video Patient Page LOE classification LOE recommendation

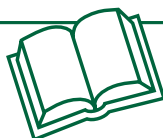


tinyurl.com/neurologyfan twitter.com/GreenJournal



Cover image: A transverse section of the sural nerve biopsy specimen from a patient with IgG4-positive cell infiltration, using image software to show just the connective tissue area. See page 1400.

Look for **Publish Ahead of Print** articles and editorials under the Ahead of Print tab at Neurology.org



Neurology[®] Online CME Program

Earn CME while reading *Neurology*. This program is available only to online *Neurology* subscribers. Simply read the articles marked CME, go to www.neurology.org, and click on CME. This will provide all of the information necessary to get started. The American Academy of Neurology (AAN) is accredited by the Accreditation Council for Continuing Medical Education (ACCME) to sponsor continuing medical education for physicians. *Neurology* is planned and produced in accordance with the ACCME Essentials. For more information, contact AAN Member Services at 800-879-1960.

Neurology[®]

85 (16)

Neurology 2015;85:e128-1434

This information is current as of January 1, 2015

Updated Information & Services

including high resolution figures, can be found at:
<http://n.neurology.org/content/85/16.full>

Permissions & Licensing

Information about reproducing this article in parts (figures, tables) or in its entirety can be found online at:
http://www.neurology.org/about/about_the_journal#permissions

Reprints

Information about ordering reprints can be found online:
<http://n.neurology.org/subscribers/advertise>

Neurology® is the official journal of the American Academy of Neurology. Published continuously since 1951, it is now a weekly with 48 issues per year. Copyright . All rights reserved. Print ISSN: 0028-3878. Online ISSN: 1526-632X.

