

Neurology[®]

Table of Contents

Volume 85, Number 3, July 21, 2015

Neurology.org

THE MOST WIDELY READ AND HIGHLY CITED PEER-REVIEWED
NEUROLOGY JOURNAL





IN FOCUS

- 207 Spotlight on the July 21 Issue
- 247 This Week's *Neurology*[®] Podcast

EDITORIALS

- 208 Sudden death in epilepsy: Where is the "heart" of the problem?
L. Jehi and S. Schuele
- 210 Essentially all models are wrong, but some are useful
J.M. Simard


ARTICLES

- 212 Sudden cardiac arrest in people with epilepsy in the community: Circumstances and risk factors
R.J. Lamberts, M.T. Blom, M. Wassenaar, A. Bardai, F.S. Leijten, G.-J. de Haan, J.W. Sander, R.D. Thijs, and H.L. Tan
Editorial, p. 208
- 219 Clinical and imaging assessment of acute combat mild traumatic brain injury in Afghanistan
O. Adam, C.L. Mac Donald, D. Rivet, J. Ritter, T. May, M. Barefield, J. Duckworth, D. LaBarge, D. Asher, B. Drinkwine, Y. Woods, M. Connor, and D.L. Brody
- 226 Comment: Does brain DTI MRI aid diagnosis of battlefield concussion?
J.W. Tsao
- 228 Reduced neurofilament expression in cutaneous nerve fibers of patients with CMT2E
C. Pisciotto, Y. Bai, K.M. Brennan, X. Wu, T. Grider, S. Feely, S. Wang, S. Moore, C. Siskind, M. Gonzalez, S. Zuchner, and M.E. Shy
- 235 Paraneoplastic neurologic disorders in small cell lung carcinoma: A prospective study
P. Gozzard, M. Woodhall, C. Chapman, A. Nibber, P. Waters, A. Vincent, B. Lang, and P. Maddison
 
- 240 Effect of comorbidity on mortality in multiple sclerosis
R.A. Marrie, L. Elliott, J. Marriott, M. Cossoy, J. Blanchard, S. Leung, and N. Yu
OPEN

- 248 Unraveling the neuroimaging predictors for motor dysfunction in long-standing multiple sclerosis
M. Daams, M.D. Steenwijk, M.P. Wattjes, J.J.G. Geurts, B.M.J. Uitdehaag, P.K. Tewarie, L.J. Balk, P.J.W. Pouwels, J. Killestein, and F. Barkhof

- 256 Ocular fundus photography of patients with focal neurologic deficits in an emergency department
L.N. Vuong, P. Thulasi, V. Biousse, P. Garza, D.W. Wright, N.J. Newman, and B.B. Bruce


CLINICAL IMPLICATIONS OF NEUROSCIENCE RESEARCH

- 263 Estrogen actions in the nervous system: Complexity and clinical implications
M.G. Cersosimo and E.E. Benarroch


VIEWS & REVIEWS

- 274 Improving early clinical trial phase identification of promising therapeutics
T.A. Kent, S.D. Shah, and P. Mandava
Editorial, p. 210
- 284 Neuroanatomical foundations of naming impairments across different neurologic conditions
E. Gleichgerrcht, J. Fridriksson, and L. Bonilha

CLINICAL/SCIENTIFIC NOTES

- 293 Plasma IP-10 level distinguishes inflammatory myopathy
A. Uruha, S. Noguchi, W. Sato, H. Nishimura, S. Mitsuhashi, T. Yamamura, and I. Nishino


NEUROIMAGES

- 295 Reversible cursive agraphia
M. Matiello, E. Zimmerman, D. Caplan, and A.B. Cohen
- 297 Susceptibility-weighted imaging in Todd paralysis
C.A. Zamora and M. Kontzialis

RESIDENT & FELLOW SECTION

- e17 Clinical Reasoning: An unusual diagnostic triad
A.W. Francis, C.L. Kiernan, M.J. Huvad, A. Vargas, L.A. Zeidman, and H.E. Moss

CONTINUED

Neurology[®]

Table of Contents

continued



- e22 Clinical Reasoning: A 44-year-old woman with rapidly progressive weakness and ophthalmoplegia
K.C. Schreck, L. Schneider, and R.G. Geocadin
- e28 Teaching NeuroImages: Red forehead dot syndrome and migraine revisited
P.K. Sethi, N.K. Sethi, and J. Torgovnick

WRITECLICK[®] EDITOR'S CHOICE

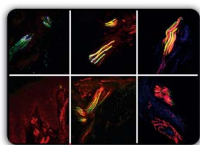
- 298 Midlife personality and risk of Alzheimer disease and distress: A 38-year follow-up
R.J. Caselli, E.A. Coon; Author Response: L. Johansson

DEPARTMENT

In the Next Issue of *Neurology*[®]

Podcast at Neurology.org CME Video Patient Page LOE classification LOE recommendation

Find us on Facebook [tinyurl.com/neurologyfan](https://www.facebook.com/Neurologyfan) twitter twitter.com/GreenJournal



Cover image: Cutaneous nerve fibers from CMT2E patients showing a lack of neurofilament expression. See page 228.

Look for **Publish Ahead of Print** articles and editorials under the Ahead of Print tab at Neurology.org



Neurology[®] Online CME Program

Earn CME while reading *Neurology*. This program is available only to online *Neurology* subscribers. Simply read the articles marked CME, go to www.neurology.org, and click on CME. This will provide all of the information necessary to get started. The American Academy of Neurology (AAN) is accredited by the Accreditation Council for Continuing Medical Education (ACCME) to sponsor continuing medical education for physicians. *Neurology* is planned and produced in accordance with the ACCME Essentials. For more information, contact AAN Member Services at 800-879-1960.

Subspecialty Alerts by E-mail!

Customize your online journal experience by signing up for e-mail alerts related to your subspecialty or area of interest. Access this free service by visiting Neurology.org/site/subscriptions/etoc.xhtml or click on the "E-mail Alerts" link on the home page. An extensive list of subspecialties, methods, and study design choices will be available for you to choose from—allowing you priority alerts to cutting-edge research in your field!

Neurology[®]

85 (3)

Neurology 2015;85:e17-299

This information is current as of January 1, 2015

Updated Information & Services

including high resolution figures, can be found at:
<http://n.neurology.org/content/85/3.full>

Permissions & Licensing

Information about reproducing this article in parts (figures, tables) or in its entirety can be found online at:
http://www.neurology.org/about/about_the_journal#permissions

Reprints

Information about ordering reprints can be found online:
<http://n.neurology.org/subscribers/advertise>

Neurology® is the official journal of the American Academy of Neurology. Published continuously since 1951, it is now a weekly with 48 issues per year. Copyright . All rights reserved. Print ISSN: 0028-3878. Online ISSN: 1526-632X.

