

# Neurology<sup>®</sup>

## Table of Contents

Volume 85, Number 5, August 4, 2015

Neurology.org

THE MOST WIDELY READ AND HIGHLY CITED PEER-REVIEWED  
NEUROLOGY JOURNAL





### IN FOCUS




- 391 Spotlight on the August 4 Issue
- 403 This Week's *Neurology*<sup>®</sup> Podcast

### EDITORIALS

- 392 Aerobic exercise in muscular dystrophy:  
Gain without pain  
*E. Ensrud and J.T. Kissel*
- 394 The end of life with PD can be well-lived:  
The neurologist's role  
*J.M. Worthington and J. Ney*

### ARTICLES



- 396 Aerobic training and postexercise protein in  
facioscapulohumeral muscular dystrophy:  
RCT study  
*G. Andersen, K.P. Prahm, J.R. Dahlqvist, G. Citirak,  
and J. Vissing*  
  **Editorial, p. 392**
- 404 When DLB, PD, and PSP masquerade as MSA:  
An autopsy study of 134 patients  
*S. Koga, N. Aoki, R.J. Uitti, J.A. van Gerpen,  
W.P. Cheshire, K.A. Josephs, Z.K. Wszolek,  
J.W. Langston, and D.W. Dickson*  
**OPEN**
- 413 Nursing home and end-of-life care in Parkinson  
disease  
*D. Safarpour, D.P. Thibault, C.L. DeSanto, C.M. Boyd,  
E.R. Dorsey, B.A. Racette, and A.W. Willis*  
**Editorial, p. 394**
- 420 Physician response to a medication alert system in  
inpatients with levodopa-treated diseases  
*M. Morris, A.W. Willis, S. Searles Nielsen, F. McCann,  
A. Birke, and B.A. Racette*
- 425 Effects of subthalamic nucleus stimulation on motor  
cortex plasticity in Parkinson disease  
*S.J. Kim, K. Udupa, Z. Ni, E. Moro, C. Gunraj,  
F. Mazzella, A.M. Lozano, M. Hodaie, A.E. Lang,  
and R. Chen*

- 433 Long-term neuropsychiatric outcomes after  
pallidal stimulation in primary and secondary  
dystonia  
*S. Meoni, M. Zurowski, A.M. Lozano, M. Hodaie,  
Y.-Y. Poon, M. Fallis, V. Voon, and E. Moro*  

- 441 Cognitive correlates of white matter lesion  
load and brain atrophy: The Northern  
Manhattan Study  
*C. Dong, N. Nabizadeh, M. Caunca, Y.K. Cheung,  
T. Rundek, M.S.V. Elkind, C. DeCarli, R.L. Sacco,  
Y. Stern, and C.B. Wright*
- 450 Inflammation-associated declines in cerebral  
vasoreactivity and cognition in type  
2 diabetes  
*C.-C. Chung, D. Pimentel, A.J. Jor'dan, Y. Hao,  
W. Milberg, and V. Novak*
- 459 Characteristic features and progression of  
abnormalities on MRI for CARASIL  
*H. Nozaki, Y. Sekine, T. Fukutake, Y. Nishimoto,  
Y. Shimoe, A. Shirata, S. Yanagawa, M. Hirayama,  
M. Tamura, M. Nishizawa, and O. Onodera*  

- 464 Status epilepticus of inflammatory etiology:  
A cohort study  
*M. Spatola, J. Novy, R. Du Pasquier, J. Dalmau,  
and A.O. Rossetti*  


### CONTEMPORARY ISSUES

- 471 A practical, simple, and useful method of categorizing  
interictal EEG features in children  
*S.H. Kim, C.M. Korff, A.J. Kim, and D.R. Nordli, Jr*

### CLINICAL/SCIENTIFIC NOTES

- 479 Respiratory dyskinesia in a patient with Parkinson  
disease successfully treated with STN DBS  
*T. Xie, R. Guan, J. Staisch, V.L. Towle,  
and P. Warnke*  
 

CONTINUED

# Neurology<sup>®</sup>

## Table of Contents

*continued*



### NEUROIMAGES

- 481 Anterior cerebral artery dissection diagnosed using high-resolution MRI  
*H. Chen, Z. Li, B. Luo, and J. Zeng*

### RESIDENT & FELLOW SECTION

- e50 Emerging Subspecialties in Neurology: Neurorehabilitation  
*C. Lin and J. Hawes*
- e53 Teaching *NeuroImages*: Epilepsia partialis continua revealing PML after allogenic stem cell transplantation  
*D. Andriuta, M. Tir, B. Perin, P.-E. Merle, C. Bryer-Le Breton, A. Charbonnier, J.-M. Constans, and O. Godefroy*

### WRITECLICK<sup>®</sup> EDITOR'S CHOICE

- 482 Adiponectin and leptin levels in migraineurs in the Atherosclerosis Risk in Communities Study  
*T. Nagai, Y. Tabara, M. Igase, T. Miki, K. Kohara; Author Response: J.L. Dearborn, R.F. Gottesman, T. Kurth, M.A. Williams, B.L. Peterlin*
- 483 Preoperative factors of apathy in subthalamic stimulated Parkinson disease: A PET study  
*M.J. Nirenberg*

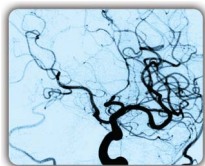
### DEPARTMENT

In the Next Issue of *Neurology*<sup>®</sup>

Podcast at [Neurology.org](http://Neurology.org) CME Video Patient Page LOE classification LOE recommendation



[tinyurl.com/neurologyfan](http://tinyurl.com/neurologyfan) [twitter.com/GreenJournal](https://twitter.com/GreenJournal)



**Cover image:** Percutaneous angiographic image of ACA dissection displaying as a long stenosis. Colorized by Cindy Abair, *Neurology* Senior Graphics Editor. See page 481.

---

Look for **Publish Ahead of Print** articles and editorials under the Ahead of Print tab at [Neurology.org](http://Neurology.org)

---



## *Neurology*<sup>®</sup> Online CME Program

Earn CME while reading *Neurology*. This program is available only to online *Neurology* subscribers. Simply read the articles marked CME, go to [www.neurology.org](http://www.neurology.org), and click on CME. This will provide all of the information necessary to get started. The American Academy of Neurology (AAN) is accredited by the Accreditation Council for Continuing Medical Education (ACCME) to sponsor continuing medical education for physicians. *Neurology* is planned and produced in accordance with the ACCME Essentials. For more information, contact AAN Member Services at 800-879-1960.

# Neurology<sup>®</sup>

85 (5)

*Neurology* 2015;85:e50-483

**This information is current as of January 1, 2015**

**Updated Information & Services**

including high resolution figures, can be found at:  
<http://n.neurology.org/content/85/5.full>

**Permissions & Licensing**

Information about reproducing this article in parts (figures, tables) or in its entirety can be found online at:  
[http://www.neurology.org/about/about\\_the\\_journal#permissions](http://www.neurology.org/about/about_the_journal#permissions)

**Reprints**

Information about ordering reprints can be found online:  
<http://n.neurology.org/subscribers/advertise>

*Neurology*® is the official journal of the American Academy of Neurology. Published continuously since 1951, it is now a weekly with 48 issues per year. Copyright . All rights reserved. Print ISSN: 0028-3878. Online ISSN: 1526-632X.

