

Neurology[®]

Table of Contents

Volume 89, Number 13, September 26, 2017
Neurology.org

THE MOST WIDELY READ AND HIGHLY CITED PEER-REVIEWED
NEUROLOGY JOURNAL





IN FOCUS



- 1313 Spotlight on the September 26 issue
- 1329 This Week's Neurology[®] Podcast

EDITORIALS

- 1314 Dietary sodium intake: An etiologic dead end in multiple sclerosis
N. Koch-Henriksen and K. Lauer
- 1316 X-linked myotubular myopathy: Living longer and awaiting treatment
R.S. Finkel and B.T. Darras
- 1318 Stem cell transplantation in Krabbe disease: New truths discovered and opinions change
W.D. Graf
- 1320 Aneurysm rupture: Another reason to abstain from smoking
D.R. Buis and H.H. Batjer

ARTICLES

- 1322 No association between dietary sodium intake and the risk of multiple sclerosis
M. Cortese, C. Yuan, T. Chitnis, A. Ascherio, and K.L. Munger
Editorial, p. 1314
- 1330 Epstein-Barr virus, cytomegalovirus, and multiple sclerosis susceptibility: A multiethnic study
A. Langer-Gould, J. Wu, R. Lucas, J. Smith, E. Gonzales, L. Amezcua, S. Haraszti, L.H. Chen, H. Quach, J.A. James, L.F. Barcellos, and A.H. Xiang

- 1338 Neuroinflammation drives anxiety and depression in relapsing-remitting multiple sclerosis
S. Rossi, V. Studer, C. Motta, S. Polidoro, J. Perugini, G. Macchiarulo, A.M. Giovannetti, L. Pareja-Gutierrez, A. Calò, I. Colonna, R. Furlan, G. Martino, and D. Centonze

- 1348 High frequency of gastrointestinal manifestations in myotonic dystrophy type 1 and type 2
J.E. Hilbert, R.J. Barohn, P.R. Clemens, E.A. Luebke, W.B. Martens, M.P. McDermott, A.L. Parkhill, R. Tawil, C.A. Thornton, and R.T. Moxley III, on behalf of the National Registry Scientific Advisory Committee/Investigators

- 1355 A natural history study of X-linked myotubular myopathy
K. Amburgey, E. Tsuchiya, S. de Chastonay, M. Glueck, R. Alvarez, C.-T. Nguyen, A. Rutkowski, J. Hornyak, A.H. Beggs, and J.J. Dowling
OPEN Editorial, p. 1316
- 1365 Developmental outcomes of cord blood transplantation for Krabbe disease: A 15-year study
M.D. Wright, M.D. Poe, A. DeRenzo, S. Haldal, and M.L. Escolar
 **Editorial, p. 1318**
- 1373 Brain network efficiency is influenced by the pathologic source of corticobasal syndrome
J.D. Medaglia, W. Huang, S. Segarra, C. Olm, J. Gee, M. Grossman, A. Ribeiro, C.T. McMillan, and D.S. Bassett
OPEN
- 1382 Sex differences in Alzheimer risk: Brain imaging of endocrine vs chronologic aging
L. Mosconi, V. Berti, C. Quinn, P. McHugh, G. Petrongolo, I. Varsavsky, R.S. Osorio, A. Pupi, S. Vallabhajosula, R.S. Isaacson, M.J. de Leon, and R.D. Brinton
- 1391 ¹H-MRS metabolites and rate of β -amyloid accumulation on serial PET in clinically normal adults
Z. Nedelska, S.A. Przybelski, T.G. Lesnick, C.G. Schwarz, V.J. Lowe, M.M. Machulda, W.K. Kremers, M.M. Mielke, R.O. Roberts, B.F. Boeve, D.S. Knopman, R.C. Petersen, C.R. Jack, Jr., and K. Kantarci
OPEN
- 1400 Effect of informed consent on patient characteristics in a stroke thrombolysis trial
G. Thomalla, F. Boutitie, J.B. Fiebach, C.Z. Simonsen, N. Nighoghossian, S. Pedraza, R. Lemmens, P. Roy, K.W. Muir, C. Heesen, M. Ebinger, I. Ford, B. Cheng, T.-H. Cho, J. Puig, V. Thijs, M. Endres, J. Fiehler, and C. Gerloff
OPEN
- 1406 Comment: Capacity, consent, and country in acute stroke research
D.T. Chen and B.B. Worrall
- 1408 Association of intracranial aneurysm rupture with smoking duration, intensity, and cessation
A. Can, V.M. Castro, Y.H. Ozdemir, S. Dagen, S. Yu, D. Dligach, S. Finan, V. Gainer, N.A. Shadick, S. Murphy, T. Cai, G. Savova, R. Dammers, S.T. Weiss, and R. Du
 **Editorial, p. 1320**

CONTINUED

Neurology[®]

Table of Contents

continued



- 1416 Thalamic deep brain stimulation for tremor in Parkinson disease, essential tremor, and dystonia
R.G. Cury, V. Fraix, A. Castrioto, M.A. Pérez Fernández, P. Krack, S. Chabardes, E. Seigneuret, E.J.L. Alho, A.-L. Benabid, and E. Moro



CLINICAL/SCIENTIFIC NOTES

- 1424 Abdominal tremor in thyrotoxicosis
D.M. Kelly, T. Lynch, and L.F. Casserly



NEUROIMAGES

- 1426 Benefit of dual-energy CT iodine overlay technique for T1-hyperintense brain lesion
Y. Lee, H.S. Seo, B.-K. Je, S.-D. Kim, and H.E. Oh

REFLECTIONS: NEUROLOGY AND THE HUMANITIES

- e151 Doctors without weapons: "You people are pathetic"
J.E. Riggs

RESIDENT & FELLOW SECTION

- e154 Clinical Reasoning: A case of altered mental status, not otherwise specified
D.E. Swor, F.R. Sharp, and G.C. Jickling
- e159 Mystery Case: Diagnostic challenges in a young patient with hypereosinophilia
J.G. Ortiz, P.W. Douglas, C.E. Gill, S. Mehrotra, and J. Biller
- e166 Teaching NeuroImages: Wallerian degeneration in evolving pediatric stroke
A. Jimenez-Gomez and R.C. Stowe
- e168 Teaching Video NeuroImages: Olivary enlargement and pharyngeal nystagmus
J.B. Finlay and D.A. Yacovino



PATIENT PAGE

- e169 Multiple sclerosis, inflammation in the brain, and mood
S. Karceski

WRITECLICK[®] EDITOR'S CHOICE

- 1428 Editors' Note
C. Karam and R.C. Griggs
- 1428 Letter re: High hypothetical interest in physician-assisted death in multiple sclerosis
J.C. Masdeu
- 1428 Letter re: Physician-assisted death in chronic neurologic diseases
J.-C. Bier
- 1429 Letter re: High hypothetical interest in physician-assisted death in multiple sclerosis and Physician-assisted death in chronic neurologic diseases
N.K. Sethi
- 1429 Author response: High hypothetical interest in physician-assisted death in multiple sclerosis
R.A. Marrie, A. Salter, T. Tyry, G.R. Cutter, S. Cofield, and R.J. Fox
- 1430 Author response: Physician-assisted death in chronic neurologic diseases
J.L. Bernat and M.P. McQuillen

CORRECTION

- 1430 White matter microstructure, cognition, and molecular markers in fragile X premutation females

DEPARTMENT

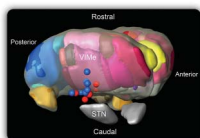
In the Next Issue of *Neurology*[®]

Podcast at Neurology.org CME Video Patient Page LOE classification LOE recommendation



Find us on Facebook

tinyurl.com/neurologyfan twitter.com/GreenJournal



Cover image: Lateral view of the right thalamus and subthalamic nucleus, depicting thalamic subdivisions and especially the nucleus ventrointermedius externus for the purpose of deep brain stimulation (dots indicate the active contact of stimulation). See page 1416.

Look for **Publish Ahead of Print** articles and editorials under the Ahead of Print tab at Neurology.org

Neurology®

89 (13)

Neurology 2017;89:e166-1430

This information is current as of January 1, 2017

Updated Information & Services

including high resolution figures, can be found at:
<http://n.neurology.org/content/89/13.full>

Permissions & Licensing

Information about reproducing this article in parts (figures, tables) or in its entirety can be found online at:
http://www.neurology.org/about/about_the_journal#permissions

Reprints

Information about ordering reprints can be found online:
<http://n.neurology.org/subscribers/advertise>

Neurology® is the official journal of the American Academy of Neurology. Published continuously since 1951, it is now a weekly with 48 issues per year. Copyright . All rights reserved. Print ISSN: 0028-3878. Online ISSN: 1526-632X.

