

Select figures listed on the Table of Contents only appear within the full-length articles online.

## In Focus

- 449 **Spotlight on the March 5 issue**
- 450 **This Week's *Neurology*® Podcast**

## Editorials

- 451 **Neurofilament light chain: An important step toward a disease biomarker in multiple sclerosis**  
T. Berger and O. Stüve
- 453 **Is outcome of subthalamic nucleus deep brain stimulation in Parkinson disease predictable?**  
C.-C. Chen

## Articles: Short Format

Full articles at [Neurology.org/N](http://Neurology.org/N)

- 455 **Blood neurofilament light chain as a biomarker of MS disease activity and treatment response**  
J. Kuhle, H. Kropshofer, D.A. Haering, U. Kundu, R. Meinert, C. Barro, F. Dahlke, D. Tomic, D. Leppert, and L. Kappos  
➔ Editorial, p. 451 [Open Access Article](#)
- 456 **Validation of an algorithm for identifying MS cases in administrative health claims datasets**  
W.J. Culpepper, R.A. Marrie, A. Langer-Gould, M.T. Wallin, J.D. Campbell, L.M. Nelson, W.E. Kaye, L. Wagner, H. Tremlett, L.H. Chen, S. Leung, C. Evans, S. Yao, and N.G. LaRocca, on behalf of the United States Multiple Sclerosis Prevalence Workgroup (MSPWG)  
[Open Access Article](#)
- 457 **The prevalence of MS in the United States: A population-based estimate using health claims data**  
M.T. Wallin, W.J. Culpepper, J.D. Campbell, L.M. Nelson, A. Langer-Gould, R.A. Marrie, G.R. Cutter, W.E. Kaye, L. Wagner, H. Tremlett, S.L. Buka, P. Dilokthornsakul, B. Topol, L.H. Chen, and N.G. LaRocca, on behalf of the US Multiple Sclerosis Prevalence Workgroup  
[Open Access Article](#) 🎧 Podcast
- 458 **Education and cognitive reserve in old age**  
R.S. Wilson, L. Yu, M. Lamar, J.A. Schneider, P.A. Boyle, and D.A. Bennett  
🎧 CME Course
- 459 **Neural correlates of domain-specific cognitive decline: The ARIC-NCS Study**  
A.L.C. Schneider, M.L. Senjem, A. Wu, A. Gross, D.S. Knopman, J.L. Gunter, C.G. Schwarz, T.H. Mosley, R.F. Gottesman, A.R. Sharrett, and C.R. Jack, Jr.
- 460 **Relative preservation of facial expression recognition in posterior cortical atrophy**  
P.S. Pressman, K. Gola, S.M. Shdo, B.L. Miller, C. Fredericks, C. Mielke, V. Pelak, and K.P. Rankin
- 461 **Charles Bonnet syndrome and periodic alternating nystagmus: Moving visual hallucinations**  
N. Minakaran, T. Soorma, A.M. Bronstein, and G.T. Plant
- 462 **Iron deposition in periaqueductal gray matter as a potential biomarker for chronic migraine**  
C. Domínguez, A. López, P. Ramos-Cabrer, A. Vieites-Prado, M. Pérez-Mato, C. Villalba, T. Sobrino, X. Rodríguez-Osorio, F. Campos, J. Castillo, and R. Leira  
🎧 CME Course

## ➔ Ahead of Print Articles and Editorials

[NPub.org/aheadofprint](http://NPub.org/aheadofprint)

*Continued*

463 **Distribution of cerebral microbleeds in the East and West: Individual participant meta-analysis**

Y. Yakushiji, D. Wilson, G. Ambler, A. Charidimou, A. Beiser, M.A. van Buchem, C. DeCarli, D. Ding, V. Gudnason, H. Hara, T. Imaizumi, K. Kohara, H.-M. Kwon, L.J. Launer, V. Mok, T. Phan, S.R. Preis, J.R. Romero, S. Seshadri, V. Srikanth, Y. Takashima, Y. Tsushima, Z. Wang, P.A. Wolf, Y. Xiong, S. Yamaguchi, and D.J. Werring

464 **Somatosensory system integrity explains differences in treatment response after stroke**

M.L. Ingemanson, J.R. Rowe, V. Chan, E.T. Wolbrecht, D.J. Reinkensmeyer, and S.C. Cramer

465 **Quality of life predicts outcome of deep brain stimulation in early Parkinson disease**

W.M.M. Schuepbach, L. Tonder, A. Schnitzler, P. Krack, J. Rau, A. Hartmann, T.D. Hälbig, F. Pineau, A. Falk, L. Paschen, S. Paschen, J. Volkman, H.S. Dafsari, M.T. Barbe, G.R. Fink, A. Kühn, A. Kupsch, G.-H. Schneider, E. Seigneuret, V. Fraix, A. Kistner, P.P. Chaynes, F. Ory-Magne, C. Brefel-Courbon, J. Vesper, L. Wojtecki, S. Derrey, D. Maltête, P. Damier, P. Derkinderen, F. Sixel-Döring, C. Trenkwalder, A. Gharabaghi, T. Wächter, D. Weiss, M.O. Pinsker, J.-M. Regis, T. Witjas, S. Thobois, P. Mertens, K. Knudsen, C. Schade-Brittinger, J.-L. Houeto, Y. Agid, M. Vidailhet, L. Timmermann, and G. Deuschl, for the EARLYSTIM study group

➔ Editorial, p. 453 [Open Access Article](#)

466 **FDG-PET patterns associated with underlying pathology in corticobasal syndrome**

M. Pardini, E.D. Huey, S. Spina, W.C. Kreis, S. Morbelli, E.M. Wassermann, F. Nobili, B. Ghetti, and J. Grafman

## What's Happening

467 **What's happening in *Neurology*<sup>®</sup>**

468 **What's happening in Innovations in Care Delivery**

## Views & Reviews

469 **A new way to estimate neurologic disease prevalence in the United States: Illustrated with MS**

L.M. Nelson, M.T. Wallin, R.A. Marrie, W.J. Culpepper, A. Langer-Gould, J. Campbell, S. Buka, H. Tremlett, G. Cutter, W. Kaye, L. Wagner, and N.G. Larocca, for the United States Multiple Sclerosis Prevalence Workgroup

[Open Access](#)

## Clinical/Scientific Notes

481 **Peripheral neuropathy associated with silver toxicity**

E. Naddaf, P.J. Dyck, P.J. Jannetto, D.L. Murray, and P.J.B. Dyck

## NeuroImages

484 **Acute ischemic stroke due to painless long-segmental aortic dissection**

C. Qin and D.-S. Tian

## Resident & Fellow Section

486 **Clinical Reasoning: A 15-year-old boy with bilateral wrist pain in the setting of weight loss**

K.H.V. Lau, W.S. David, and R. Sadjadi

e1136 **Clinical Reasoning: A 54-year-old man with dyspnea and muscle weakness**

A. Chertcoff, M. Saucedo, L. Bando, F. Pantiu, L. León Cejas, E. Borsini, R. Reisin, and B. Udd

e1141 **Teaching NeuroImages: Cerebrospinal fluid leakage observed from skin after acupuncture**

S.-M. Noh, K.M. Lee, and B.J. Kim

e1143 **Teaching NeuroImages: Migrating sparganum captured on brain MRI**

Z. Yan and M. Zheng

## Disputes & Debates: Editors' Choice

493 **Editors' note: Pattern of polyphenol intake and the long-term risk of dementia in older persons**

A. Ganesh and S. Galetta

493 **Reader response: Pattern of polyphenol intake and the long-term risk of dementia in older persons**

S.R. Brenner

494 **Editors' note: Lymphoplasmacyte-rich meningioma involving the whole intracranial dura mater**

A. Ganesh and S. Galetta

494 **Reader response: Lymphoplasmacyte-rich meningioma involving the whole intracranial dura mater**

N. Fukuhara and T. Makifuchi

495 **Author response: Lymphoplasmacyte-rich meningioma involving the whole intracranial dura mater**

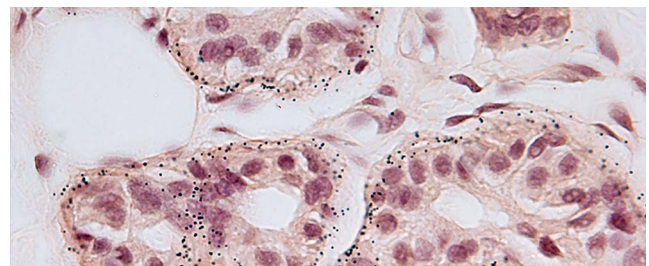
X. Yang and J. Liu

## Correction

495 **Association of peripheral blood pressure with gray matter volume in 19- to 40-year-old adults**

## Department

**In the Next Issue of *Neurology*<sup>®</sup>**



➔ **Cover image**

Skin biopsy paraffin sections-Congo red stain, demonstrating grayish brown microparticles surrounding sweat glands in a patient with peripheral neuropathy.

[See page 481](#)

# Neurology®

92 (10)

*Neurology* 2019;92:e1072-495

**This information is current as of January 1, 2019**

**Updated Information & Services**

including high resolution figures, can be found at:  
<http://n.neurology.org/content/92/10.full>

**Permissions & Licensing**

Information about reproducing this article in parts (figures, tables) or in its entirety can be found online at:  
[http://www.neurology.org/about/about\\_the\\_journal#permissions](http://www.neurology.org/about/about_the_journal#permissions)

**Reprints**

Information about ordering reprints can be found online:  
<http://n.neurology.org/subscribers/advertise>

*Neurology*® is the official journal of the American Academy of Neurology. Published continuously since 1951, it is now a weekly with 48 issues per year. Copyright . All rights reserved. Print ISSN: 0028-3878. Online ISSN: 1526-632X.

