

Select figures listed on the Table of Contents only appear within the full-length articles online.

## In Focus

- 497 **Spotlight on the March 12 issue**
- 498 **This Week's *Neurology*® Podcast**

## Editorials

- 499 **Enlightened PD: A novel treatment for Parkinson disease?**  
A. Videnovic and L. Messinis
- 501 **Live-cell based assays are the gold standard for anti-MOG-Ab testing**  
E.A. Yeh and I. Nakashima

## In Memoriam

- 503 **In Memoriam: Sir Roger G. Bannister, CH, CBE, MSc, MA, DM, FRCP (1929–2018)**  
M. Hanna and M. Swash

## Articles: Short Format

Full articles at [Neurology.org/N](http://Neurology.org/N)

- 505 **Bright light therapy for depression in Parkinson disease: A randomized controlled trial**  
S. Rutten, C. Vriend, J.H. Smit, H.W. Berendse, E.J.W. van Someren, A.W. Hoogendoorn, J.W.R. Twisk, Y.D. van der Werf, and O.A. van den Heuvel  
▶ CME Course ▶ Editorial, p. 499 ▶ Class of Evidence
- 506 **Apathy is associated with large-scale white matter network disruption in small vessel disease**  
J. Tay, A.M. Tuladhar, M.J. Hollocks, R.L. Brookes, D.J. Tozer, T.R. Barrick, M. Husain, F.-E. de Leeuw, and H.S. Markus  
▶ Open Access Article
- 507 **Blood pressure, glycemic control, and white matter hyperintensity progression in type 2 diabetics**  
A. de Havenon, J.J. Majersik, D.L. Tirschwell, J.S. McNally, G. Stoddard, and N.S. Rost
- 508 **Relative effects of LDL-C on ischemic stroke and coronary disease: A Mendelian randomization study**  
E. Valdes-Marquez, S. Parish, R. Clarke, T. Stari, B.B. Worrall, METASTROKE Consortium of the ISGC, and J.C. Hopewell  
▶ Open Access Article
- 509 **Lumbosacral radiculoplexus neuropathy: Incidence and the association with diabetes mellitus**  
P.S. Ng, P.J. Dyck, R.S. Laughlin, P. Thapa, M.V. Pinto, and P.J.B. Dyck
- 510 **Randomized controlled trial comparing botulinum vs surgery for drooling in neurodisabilities**  
S. Bekkers, C.P. Delsing, S.E. Kok, K. van Hulst, C.E. Erasmus, A.R.T. Scheffer, and F.J.A. van den Hoogen  
▶ Class of Evidence
- 511 **Muscle and not neuronal biomarkers correlate with severity in spinal and bulbar muscular atrophy**  
V. Lombardi, G. Querin, O.J. Ziff, L. Zampedri, I. Martinelli, C. Heller, M. Foiani, C. Bertolin, C.-H. Lu, B. Malik, K. Allen, C. Rinaldi, H. Zetterberg, A. Heslegrave, L. Greensmith, M. Hanna, G. Soraru, A. Malaspina, and P. Fratta  
▶ CME Course ▶ Open Access Article
- 512 **Cognitive approach to rehabilitation in children with hyperkinetic movement disorders post-DBS**  
H. Gimeno, R.G. Brown, J.-P. Lin, V. Cornelius, and H.J. Polatajko  
▶ Video ▶ Class of Evidence
- 513 **Biallelic variants in *LARS2* and *KARS* cause deafness and (ovario)leukodystrophy**  
M.S. van der Knaap, M. Bugiani, M.I. Mendes, L.G. Riley, D.E.C. Smith, J. Rudinger-Thirion, M. Frugier, M. Breur, J. Crawford, J. van Gaalen, M. Schouten, M. Willems, Q. Waisfisz, F.T. Mau-Them, R.J. Rodenburg, R.J. Taft, B. Keren, J. Christodoulou, C. Depienne, C. Simons, G.S. Salomons, and F. Mochel

## ▶ Ahead of Print Articles and Editorials

[NPub.org/aheadofprint](http://NPub.org/aheadofprint)

*Continued*

514 **Clinical spectrum of *STX1B*-related epileptic disorders**

S. Wolking, P. May, D. Mei, R.S. Møller, S. Balestrini, K.L. Helbig, C.D. Altuzarra, N. Chatron, C. Kaiwar, K. Stöhr, P. Widdess-Walsh, B.A. Mendelsohn, A. Numis, M.R. Cilio, W. Van Paesschen, L.L. Svendsen, S. Oates, E. Hughes, S. Goyal, K. Brown, M.S. Saenz, T. Dorn, H. Muhle, A.T. Pagnamenta, D.V. Vavoulis, S.J.L. Knight, J.C. Taylor, M.P. Canevini, F. Darra, R.H. Gavrilova, Z. Powis, S. Tang, J. Marquetand, M. Armstrong, D. McHale, E.W. Klee, G.J. Kluger, D.H. Lowenstein, S. Weckhuysen, D.K. Pal, I. Helbig, R. Guerrini, R.H. Thomas, M.I. Rees, G. Lesca, S.M. Sisodiya, Y.G. Weber, D. Lal, C. Marini, H. Lerche, and J. Schubert

Open Access Article

515 **A multicenter comparison of MOG-IgG cell-based assays**

P.J. Waters, L. Komorowski, M. Woodhall, S. Lederer, M. Majed, J. Fryer, J. Mills, E.P. Flanagan, S.R. Irani, A.C. Kunchok, A. McKeon, and S.J. Pittock

🔗 Editorial, p. 501 Open Access Article 🎧 Podcast

516 **Systemic inflammation during midlife and cognitive change over 20 years: The ARIC Study**

K.A. Walker, R.F. Gottesman, A. Wu, D.S. Knopman, A.L. Gross, T.H. Mosley, Jr., E. Selvin, and B.G. Windham

**What's Happening**517 **What's happening in *Neurology*<sup>®</sup> *Clinical Practice***518 **What's happening in Without Borders****Views & Reviews**519 **Imaging outcome measures of neuroprotection and repair in MS: A consensus statement from NAIMS**

J. Oh, D. Ontaneda, C. Azevedo, E.C. Klawiter, M. Absinta, D.L. Arnold, R. Bakshi, P.A. Calabresi, C. Crainiceanu, B. Dewey, L. Freeman, S. Gauthier, R. Henry, M. Inglese, S. Kolind, D.K.B. Li, C. Mainero, R.S. Menon, G. Nair, S. Narayanan, F. Nelson, D. Pelletier, A. Rauscher, W. Rooney, P. Sati, D. Schwartz, R.T. Shinohara, I. Tagge, A. Traboulsee, Y. Wang, Y. Yoo, T. Youstry, Y. Zhang, N.L. Sicotte, and D.S. Reich, on behalf of the North American Imaging in Multiple Sclerosis Cooperative

**Clinical/Scientific Notes**534 **Acute toxic limbic encephalopathy following glyphosate intoxication**

V. Planche, S. Vergnet, N. Auzou, M. Bonnet, T. Tourdias, and F. Tison

**Reflections: Neurology and the Humanities**537 **Air casts a long shadow**

R.A. Burton

🎧 Audio

**Resident & Fellow Section**538 **Education Research: Evaluation of curriculum to teach resilience skills to neurology residents**

B. Bursch, C. Mulligan, A.M. Keener, H. Aralis, J. Lloyd, C. Mogil, W. Barrera, M. Sinclair, and P. Lester

e1268 **Teaching Video NeuroImages: Stroke presenting with isolated toe-spreading palsy**

T. Sekiguchi, T. Kanazawa, and H. Tanaka

🔗 Video

e1270 **Teaching Video NeuroImages: An unusual case of fulminant subacute sclerosing panencephalitis**

I. Rizvi, R.K. Garg, A. Jain, H.S. Malhotra, N. Kumar, and R. Uniyal

🔗 Video

**Disputes & Debates: Editors' Choice**542 **Editors' note: Subcutaneous ofatumumab in patients with relapsing-remitting multiple sclerosis: The MIRROR study**

A. Lewis and S. Galetta

542 **Reader response: Subcutaneous ofatumumab in patients with relapsing-remitting multiple sclerosis: The MIRROR study**

H. Kearney

543 **Author response: Subcutaneous ofatumumab in patients with relapsing-remitting multiple sclerosis: The MIRROR study**

A. Bar-Or, R.A. Grove, J.M. Tolson, F.J. Derosier, M.C. Lopez, S.T. Kavanagh, and A.E. Miller

543 **Editors' note: IgLON5-mediated neurodegeneration is a differential diagnosis of CNS Whipple disease**

A. Lewis and S. Galetta

544 **Reader response: IgLON5-mediated neurodegeneration is a differential diagnosis of CNS Whipple disease**

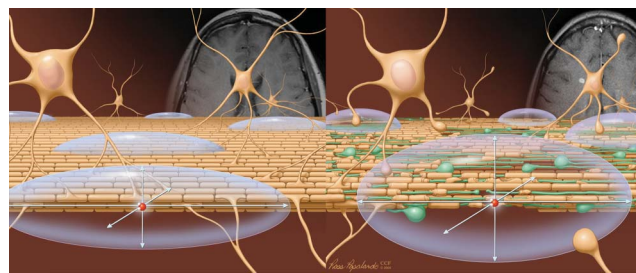
J.F. Bally and A.E. Lang

544 **Author response: IgLON5-mediated neurodegeneration is a differential diagnosis of CNS Whipple disease**

H. Morales-Briceño and V. Fung

**Department**

In the Next Issue of *Neurology*<sup>®</sup>

🔗 **Cover image**

Water diffusion along intact axonal fiber tracts in intact brain tissue and dispersed water diffusion in brain tissue with demyelination and axonal injury in a patient with MS. (Reproduced with permission from the Cleveland Clinic).

See page S19

# Neurology®

92 (11)

*Neurology* 2019;92:e1268-545

**This information is current as of January 1, 2019**

**Updated Information & Services**

including high resolution figures, can be found at:  
<http://n.neurology.org/content/92/11.full>

**Permissions & Licensing**

Information about reproducing this article in parts (figures, tables) or in its entirety can be found online at:  
[http://www.neurology.org/about/about\\_the\\_journal#permissions](http://www.neurology.org/about/about_the_journal#permissions)

**Reprints**

Information about ordering reprints can be found online:  
<http://n.neurology.org/subscribers/advertise>

*Neurology*® is the official journal of the American Academy of Neurology. Published continuously since 1951, it is now a weekly with 48 issues per year. Copyright . All rights reserved. Print ISSN: 0028-3878. Online ISSN: 1526-632X.

